

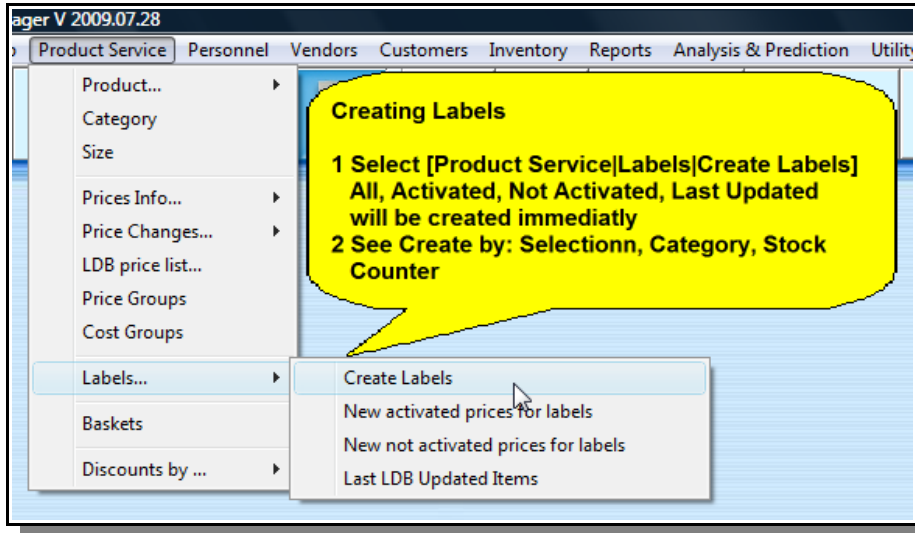
# POS Manager – Shelf Labels

## Table of Contents

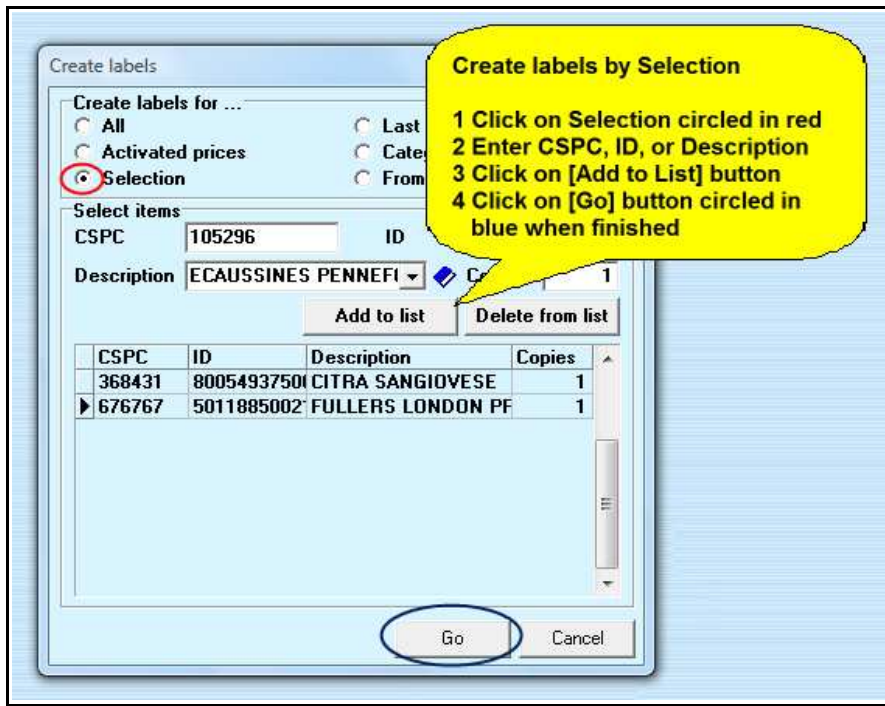
Creating Labels.....	2
Creating Labels By Selection.....	2
Creating Labels By Category.....	3
Creating Labels By Stock Counter.....	3
Printing Labels.....	4
Changing Label Size.....	5
Custom Labels Size.....	5
Review Data Fields.....	6
Designing New Label Jobs.....	7
Adding Text Data Fields.....	7
Adding Bar Code Data Fields.....	8
Setting Bar Code Style.....	9
Adding Picture Data Fields.....	10
Adding Fixed Text to Labels.....	11
Adding Borders to Labels.....	11
Saving Label Jobs.....	12
Sample Printed Labels.....	13
Notes on Labels.....	13

# POS Manager – Shelf Labels

## Creating Labels

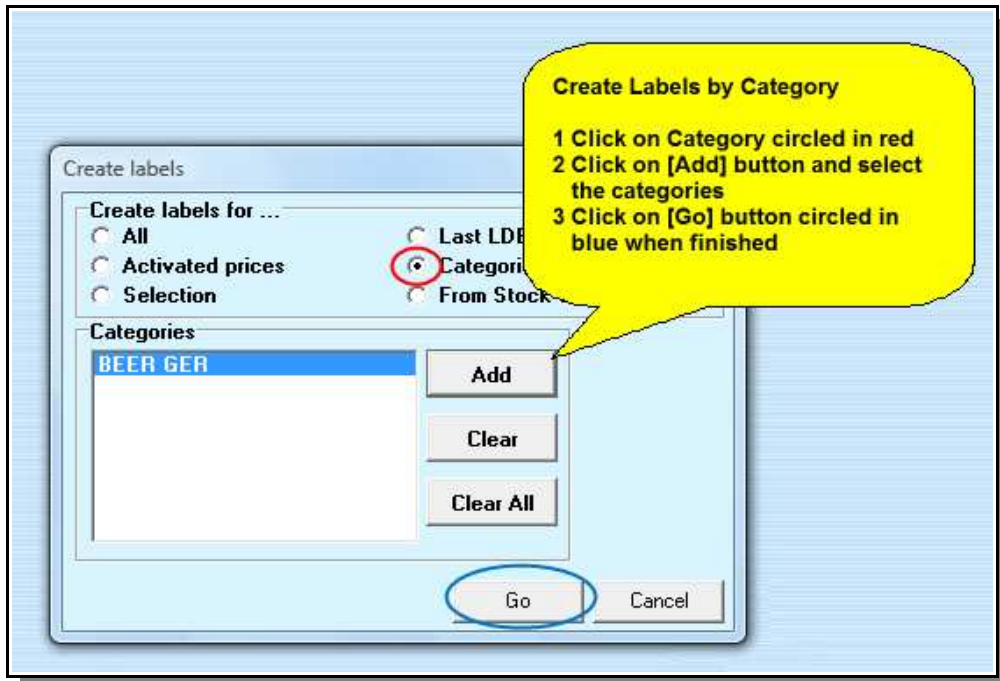


## Creating Labels By Selection

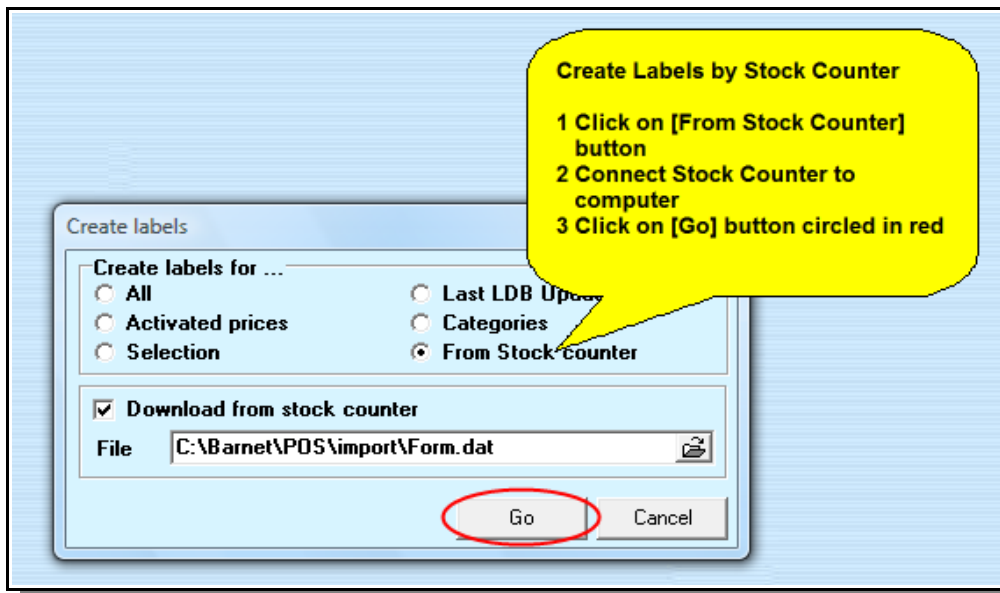


# POS Manager – Shelf Labels

## Creating Labels By Category

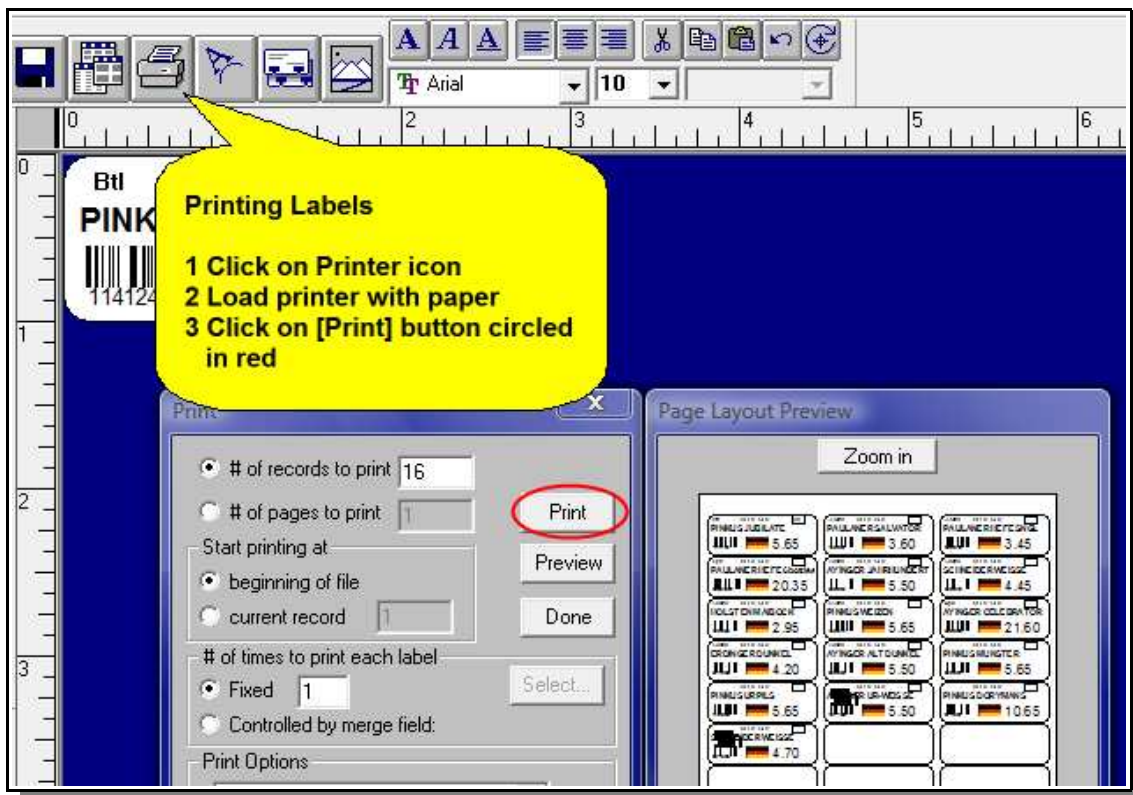
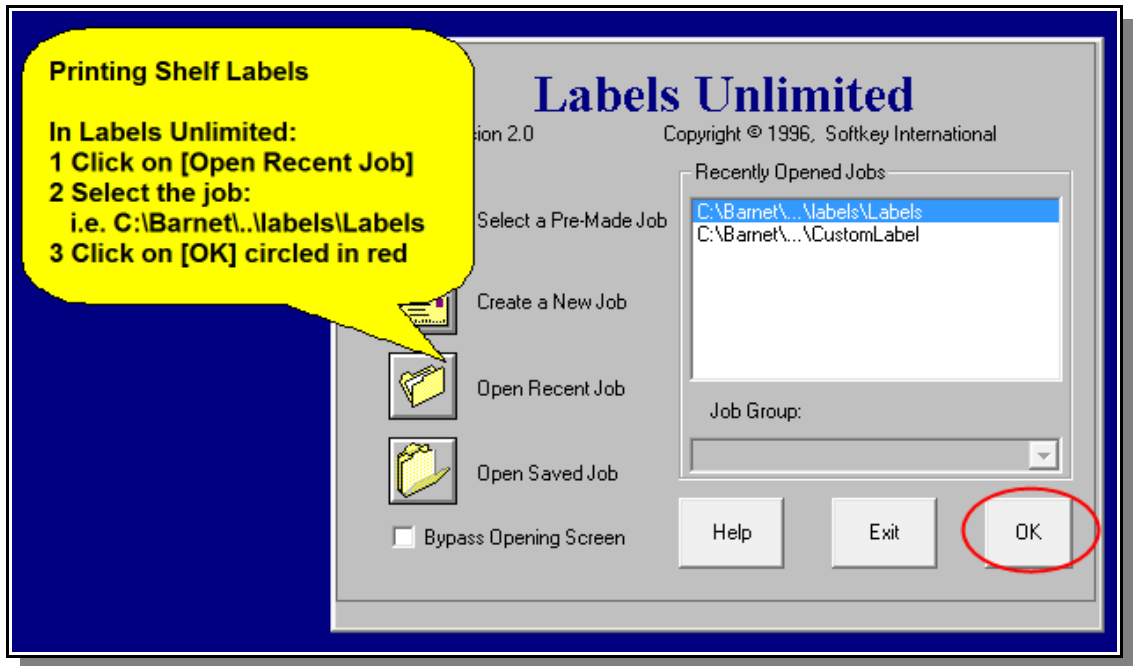


## Creating Labels By Stock Counter



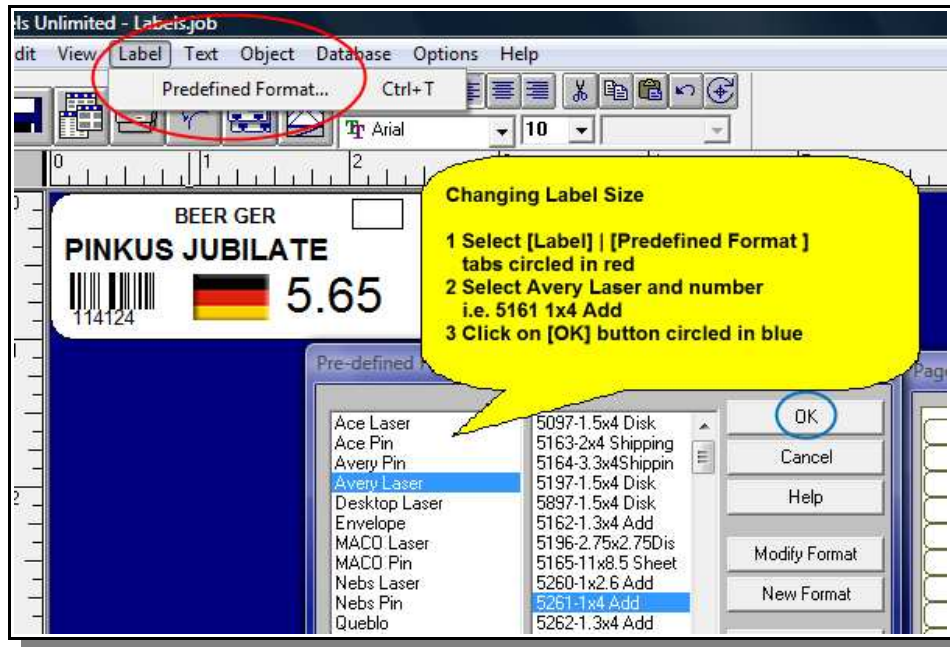
# POS Manager – Shelf Labels

## Printing Labels

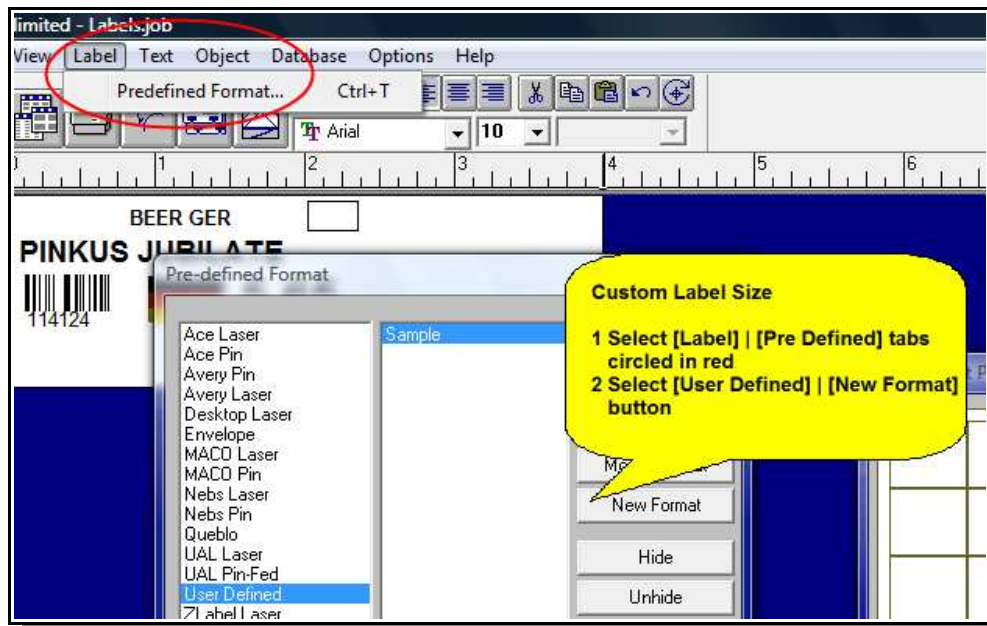


# POS Manager – Shelf Labels

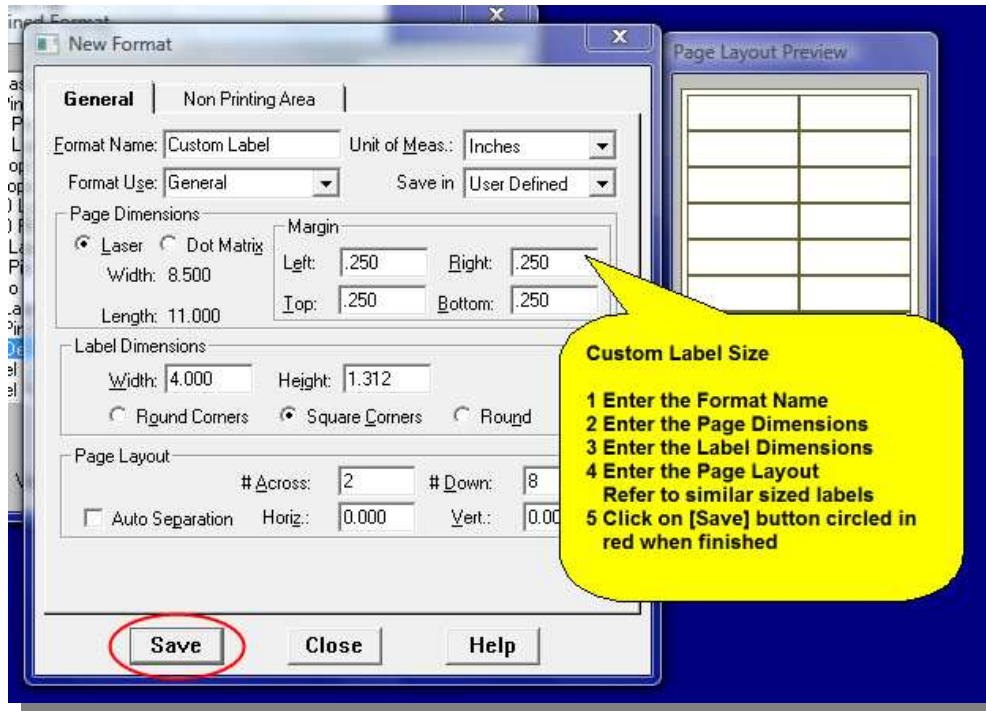
## Changing Label Size



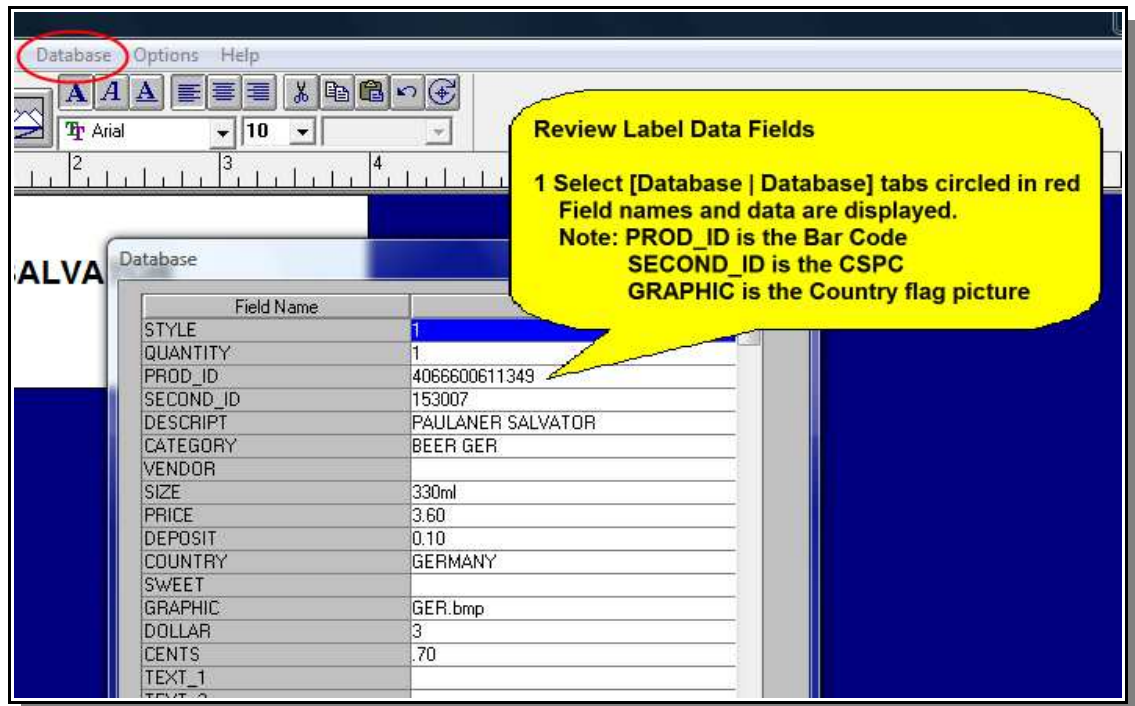
## Custom Labels Size



# POS Manager – Shelf Labels

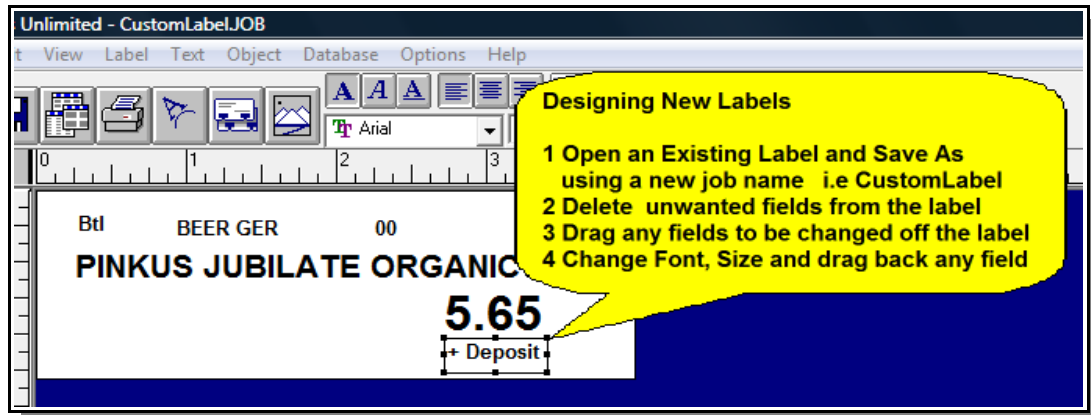


## Review Data Fields

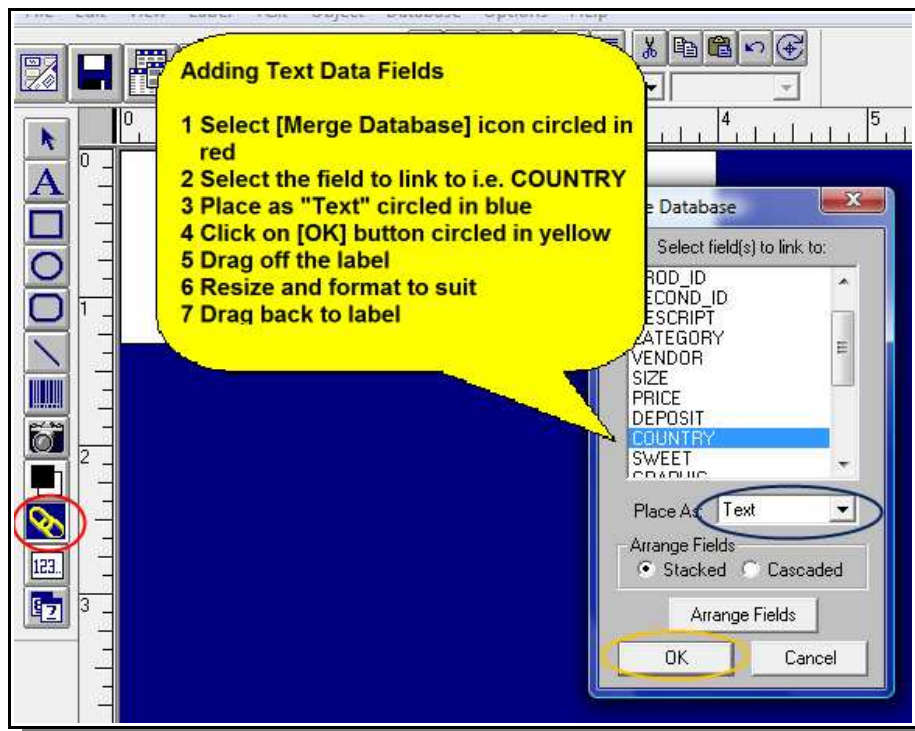


# POS Manager – Shelf Labels

## Designing New Label Jobs

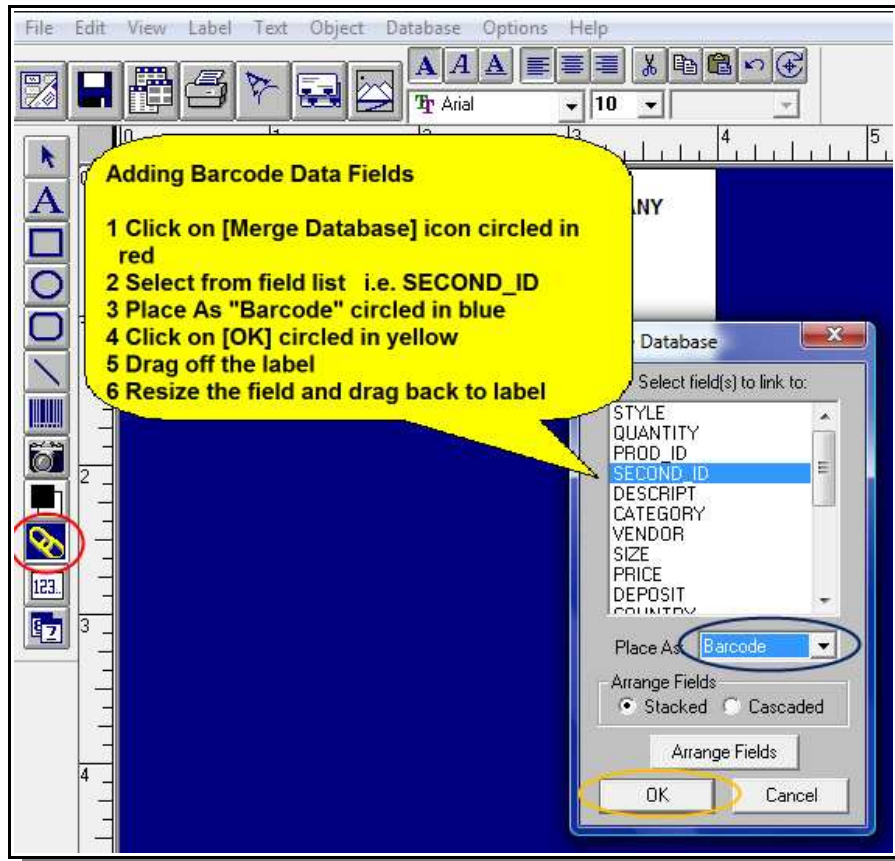


## Adding Text Data Fields



# POS Manager – Shelf Labels

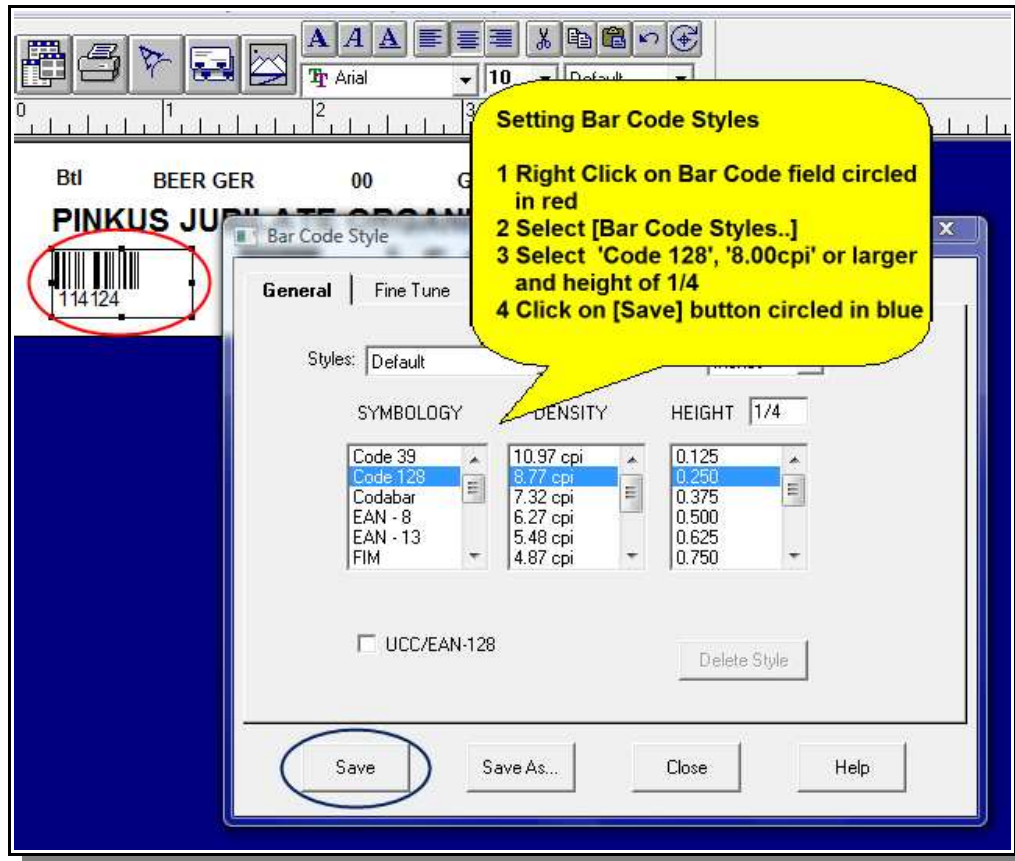
## Adding Bar Code Data Fields





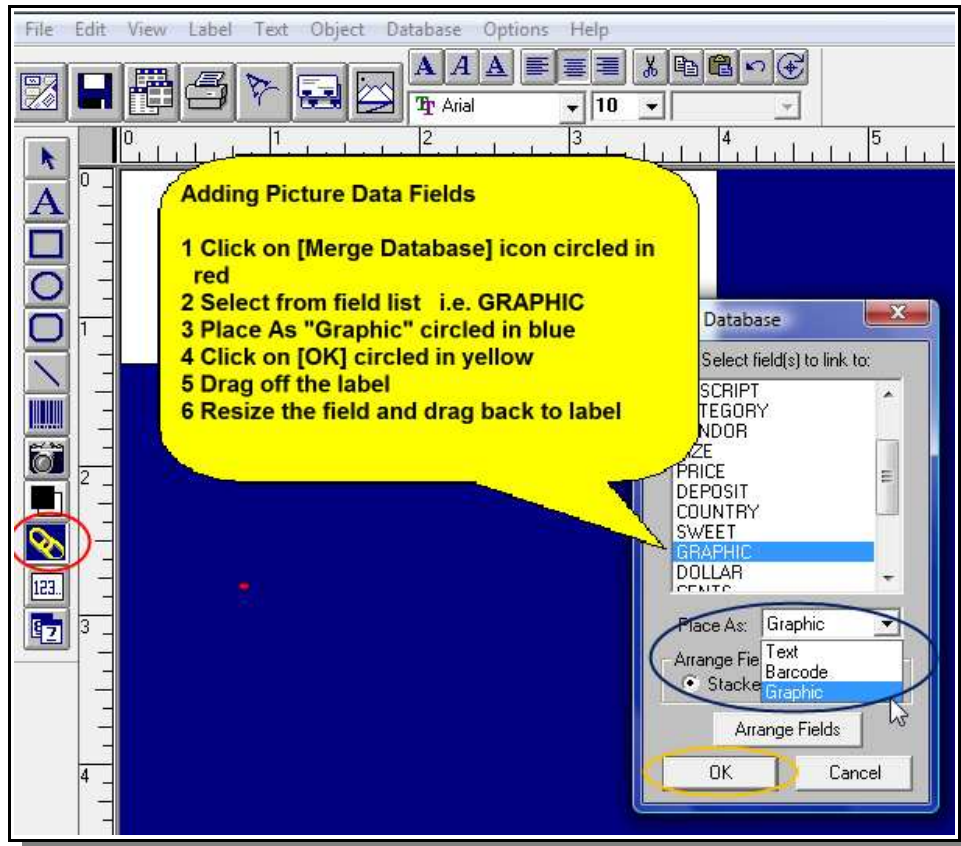
# POS Manager – Shelf Labels

## Setting Bar Code Style



# POS Manager – Shelf Labels

## Adding Picture Data Fields

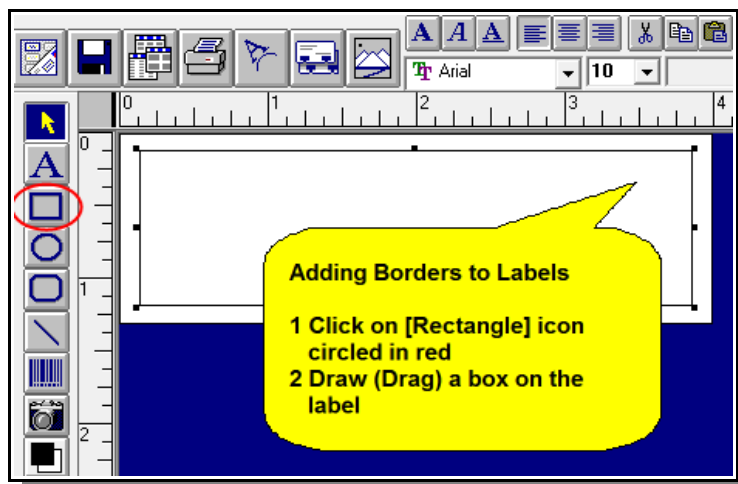


# POS Manager – Shelf Labels

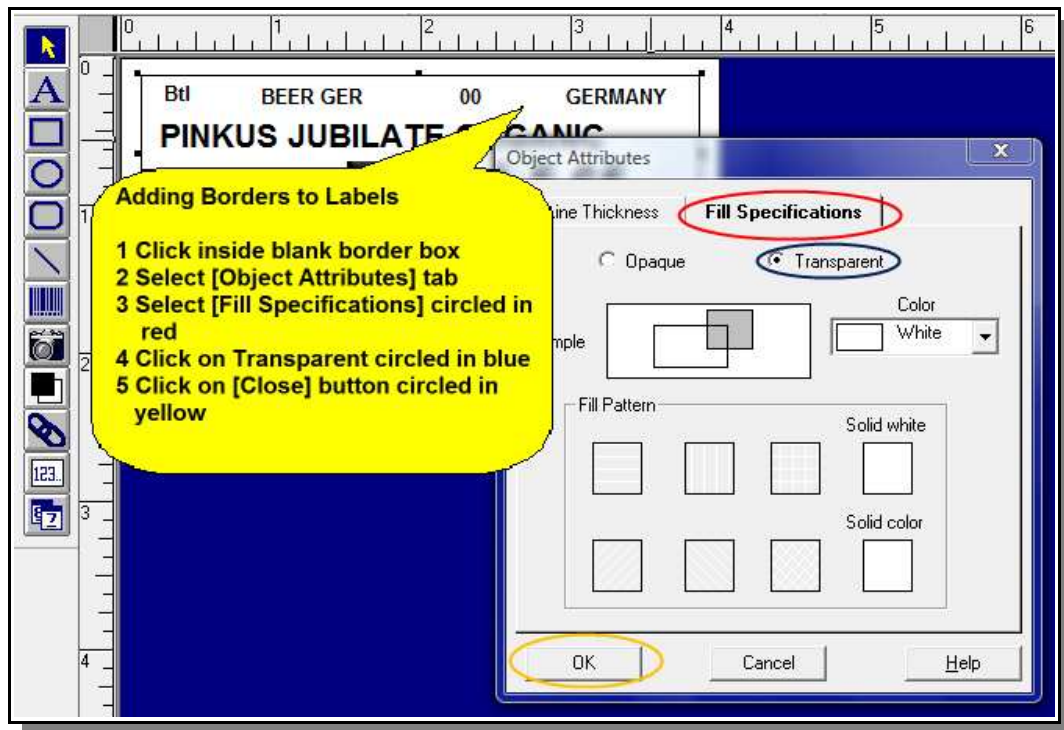
## Adding Fixed Text to Labels



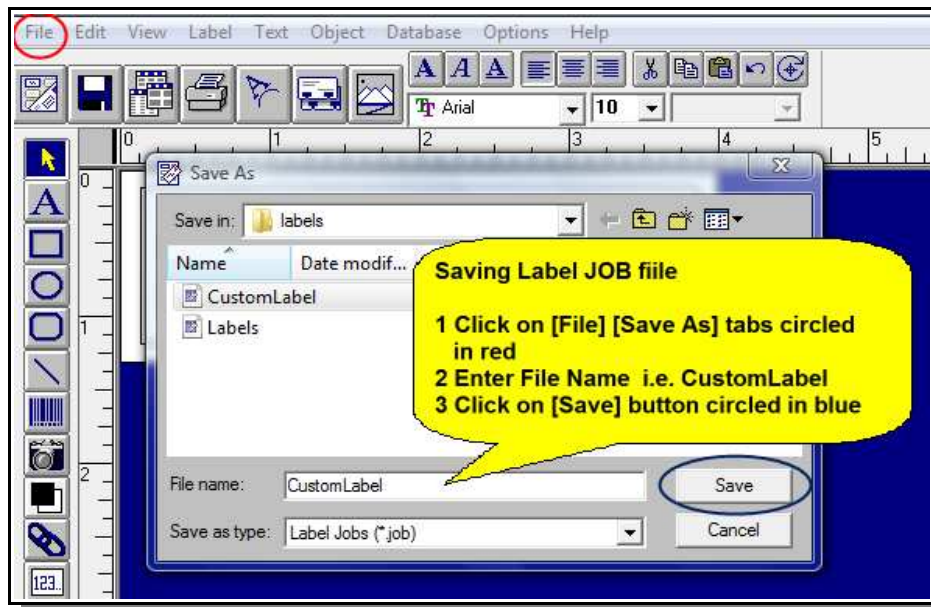
## Adding Borders to Labels



## POS Manager – Shelf Labels



## Saving Label Jobs



# POS Manager – Shelf Labels

## Sample Printed Labels



## Notes on Labels

- Create labels in POS Manager
- Print Labels in Labels Unlimited
- Labels Unlimited only uses the Windows Default Printer
- Never use Labels Unlimited for other labels
- All JOB and Data files are stored in **C:\Barnet\Pos\Labels** folder
- All BMP files to be printed as picture are stored in **C:\Program Files\Lu2** folder
- Large X printed over a bar code indicates field box is too small