



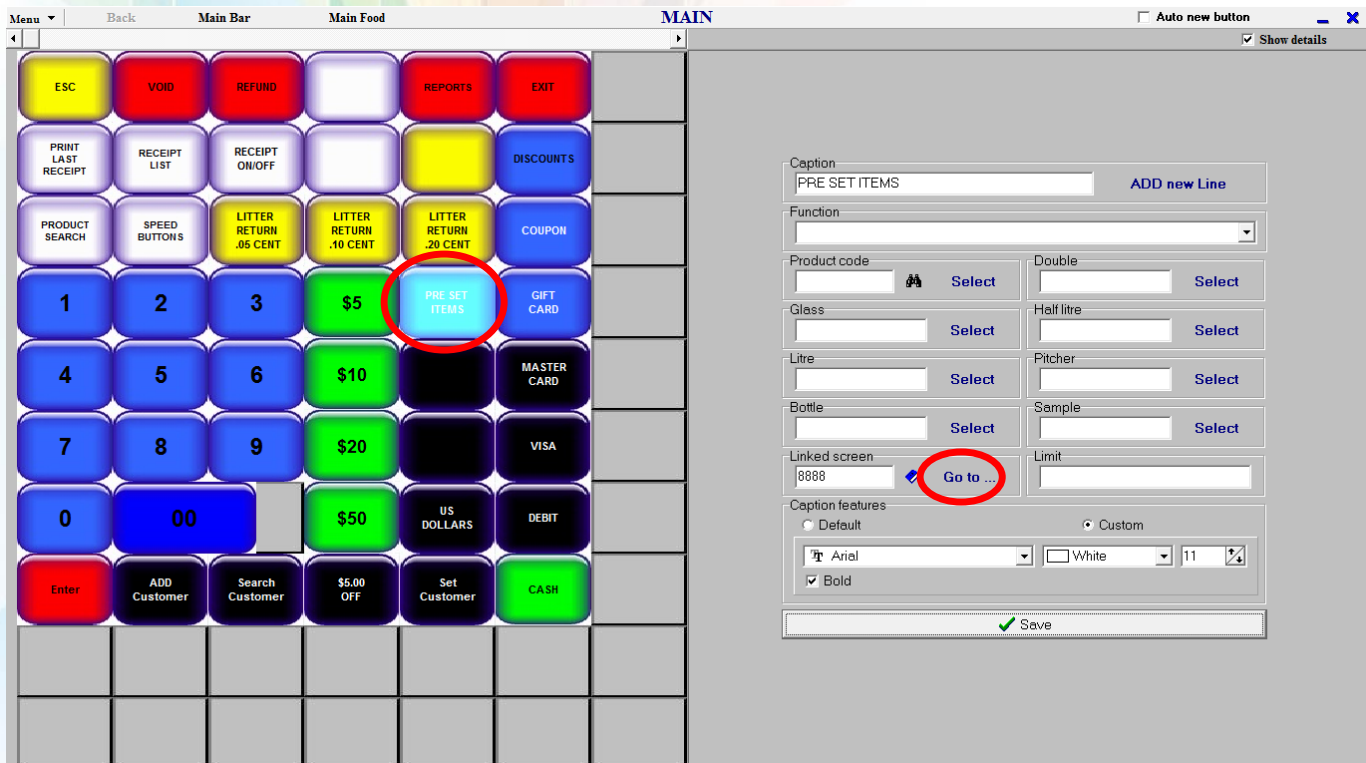
TipSheet – Creating Pre Set Speed Buttons

From Barnet Screens Designer (Till Screen Set-up)

For PRE-SET (Non-scannable) Items

>Select PRE SET ITEMS button (Because the screens are customizable, your PRE SET button may be in a different place or be a different color)

>Click on the GO TO button

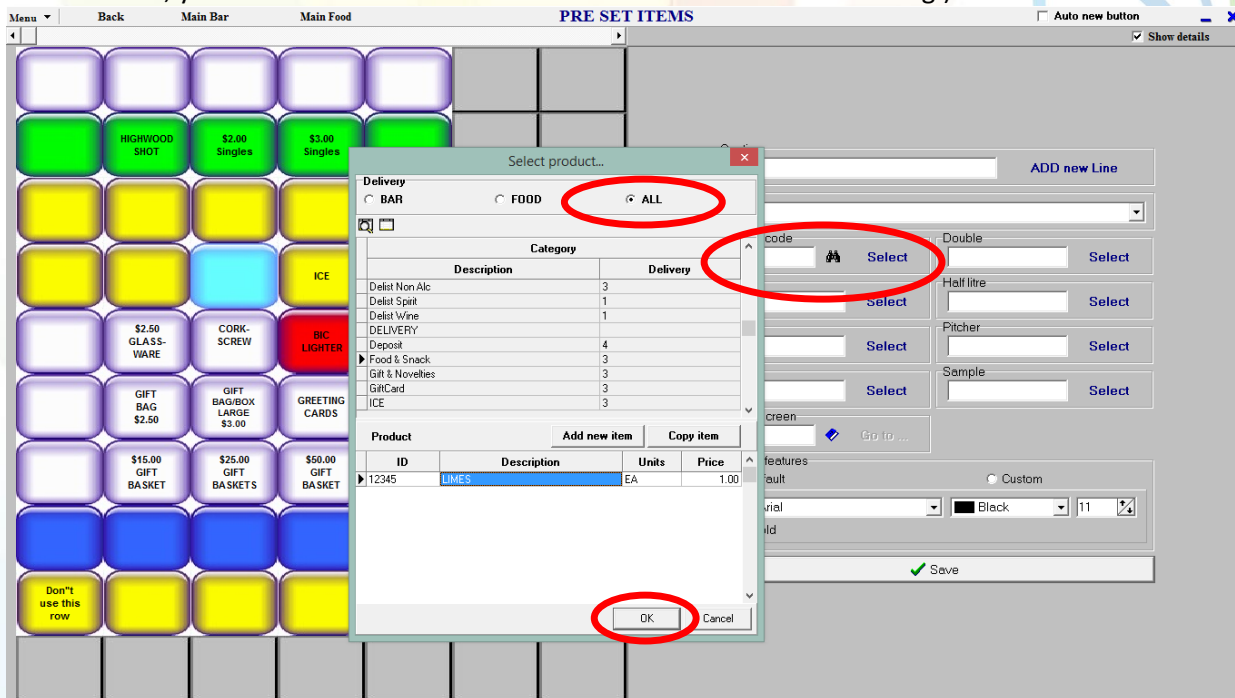


The screenshot displays the Barnet POS interface. On the left is a grid of speed buttons. The 'PRE SET ITEMS' button, located in the 4th row, 4th column, is highlighted with a red circle. On the right is the configuration window for this button. The 'Caption' field contains 'PRE SET ITEMS'. The 'Function' dropdown is set to 'PRE SET ITEMS'. The 'Linked screen' field contains '8888', and the 'Go to ...' button next to it is also highlighted with a red circle. The 'Caption features' section shows 'Default' selected, with 'Arial' font, 'White' color, and size '11'.

Alternately, you can get to the PRE SET screen by going to

- >MENU
- >ADMINISTRATIVE
- >SCREENS
- >PRE SET ITEMS (or which ever screen you are looking to edit or add buttons to)

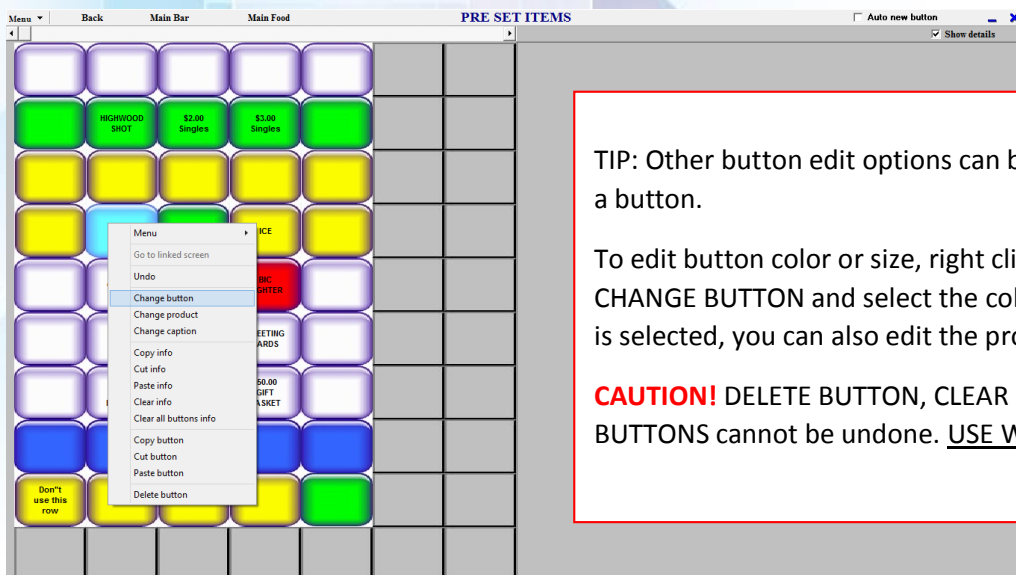
> Select an unused button then click on SELECT, tick the ALL option and search for the product, click OK (If you know the sku, you can enter it in the PRODUCT CODE box instead of searching.)



Tick the Custom box to change the default font, font color and/or font size.

>Click SAVE

You've created a new button! If the tills are in operation, the user will need to sign out and sign back in to see the new button.



TIP: Other button edit options can be found by right clicking on a button.

To edit button color or size, right click on the button, select CHANGE BUTTON and select the color or size. While the button is selected, you can also edit the product info or font choices.

CAUTION! DELETE BUTTON, CLEAR BUTTON and CLEAR ALL BUTTONS cannot be undone. USE WITH CAUTION