

XINGYUNYANG

10000KW AHTS-DP2

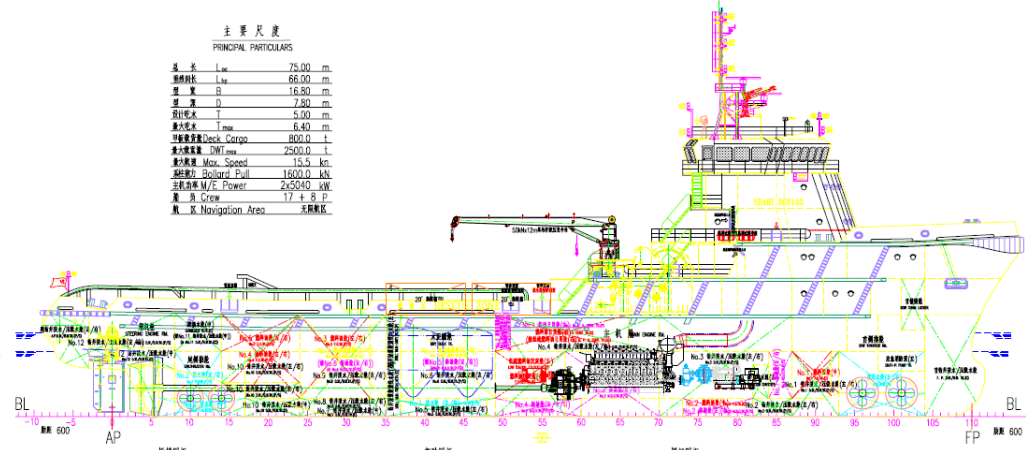
Vessel Type:	OFFSHORE SERVICE VESSEL (AHTS)	船型	海上三用工作拖轮
Building Year:	2013 (steel cutting:2012)	年份	2013年 (2012年开始建造)
Classification:	CCS	船级	中国船级社
Classification	★ CSA Tug, Offshore Supply Ship, Fire Fighting Ship 1, Water Spraying, PSPC (B) Ice Class B, ★ CSM AH, AUT-0, DP—2	入级符号	★ CSA Tug, Offshore Supply Ship, Fire Fighting Ship 1, Water Spraying, PSPC (B) Ice Class B, ★ CSM AH, AUT-0, DP—2
Principal Dimensions		主尺寸简介	
Length O.A.	75.00m	总长	75.00米
Length P.P.	66.00m	垂线间长	66.00米
Breadth:	16.80m	型宽	16.80米
Depth:	7.80m	型深	7.80米
Designed Draft:	5.0m	设计吃水	5.0米
Deck Cargo		甲板载货	
Deck Area:	510m ²	甲板面积	510平方米
Cargo loading	800T	载货量	800吨
Deck Strength:	5~10T/ m ²	甲板载荷	5~10吨/平方米
Tankage(100%Tankage)		舱容积 (100%舱容)	
Fuel Oil Tank:	848.00 m ³	燃油舱	848立方米
Fresh Water Tank:	290.00 m ³	淡水舱	290立方米
Bulk cement Tank:	170.00 m ³	水泥舱	170立方米
Drilling mud :	354.00 m ³	钻井泥浆	354立方米
Speed/Pull		航速与拉力	
Speed:	15.5knots	航速	15.5节
Bollard Pull:	181t	拉力	181吨
Endurance:	11500n miles	续航力	11500海里
Navigating Zone:	unrestricted service (ice class B2)	航却	无限航区 (2级冰区加强)
COMLEMENT: 25 P		培员 : 25人	
Main Machine		主要设备	
Main Engine:	MAN B&W /Germany MAN 9L32/44CR 5040KW×750r/min*2SET	主机	MAN B&W /德国, 2台, 单机功率5040千瓦
Generator Sets:	450KW*AC400V/50Hz/3Ph*2set Diesel Generator: CATEPILLAR C18	主发电机组	柴油机品牌: 卡特彼勒/美国, 功率: 450KW*400V/50Hz/3Ph, 2台

Shaft Generator:	4000KW*2set	轴带发电机	功率: 4000KW* 2台
Stern thruster:	Kawasaki,106KN*2 sets	艉侧推	川崎 推力 106KN*2套
Bow thruster:	Kawasaki,157KN*2 sets	艏侧推	川崎 推力 157KN*2套
CPP:	MAN B&W,2sets	可调桨	MAN B&W , 2套
Auxiliary boiler:	Power: 1200kg/h	锅炉	蒸发量: 1200千克/小时
Towing Winch:	300TX1200m*1set	拖缆机	300吨*1200米
Hydraulic anchor windlass:	Working load 128kN*2set	液压锚机	128kN拉力, 2台
Hall Anchor:	2850kg*3sets	锚	2850KG*3个
Anchor Chain:	Φ44×990m	锚链	Φ44×990米
Deck crane:	5T×12m	甲板载荷	5吨×12米
hydraulic capstan:	100KN×15m/min*2sets	绞盘机	100KN*15米/分钟*2套
Sheave:	120KN*15m/min * 2sets	绞缆机	120KN*15米/分钟*2套
Shark pincers:	working load 500T	鲨鱼钳	工作负荷 500吨
cement system:	cement tank:42.5 m ³ * 4sets, cement air compressor:75m ³ /h 0.56 Mpa work pressure*2Sets	水泥系统	水泥罐容量: 42.5立方/个*4个, 水泥空压机: 75吨/小时, 工作压力: 0.56Mpa; 2台
Liquid mud transport system:	75m ³ /h*1.8Mpa work pressure	泥浆输送系统	75立方/小时, 工作压力1.8Mpa
FIFI system:	FIFI class 1 with water curtain all round	对外消防系统	对外一级消防, 全方位水雾

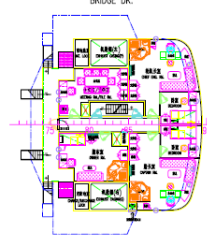


主要尺度
PRINCIPAL PARTICULARS

总长 L _{ov}	75.00 m
船体长度 L _{bp}	66.00 m
型宽 B	16.80 m
型深 D	2.80 m
设计吃水 T	5.00 m
最大吃水 T _{max}	6.40 m
甲板面积 Deck Cargo	800.0 t
最大容量 DWT	2500.0 t
最大航速 Max. Speed	15.5 kn
轴功率 Bolard Pull	1600.0 kW
主机功率 M/E Power	2x3040 kW
主机 Stroke	17 + 8 寸
航 区 Navigation Area	无限制区



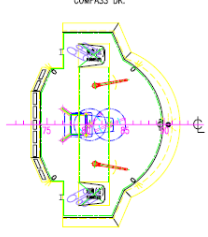
新桥甲板
BRIDGE DK.



驾驶室甲板
NAVIGATION DK.

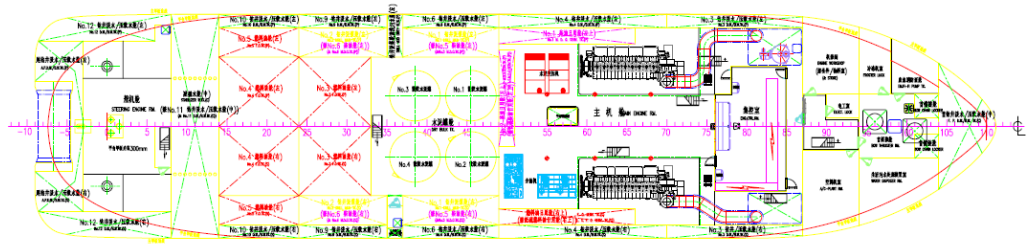


罗经甲板
COMPASS DK.

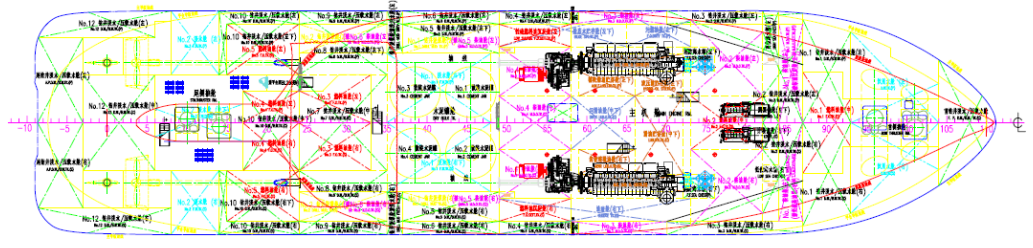


设计单位: 100000 瓦特 (WAT) SC8103-100-04
 船名: 瓦特 (WAT) HULL NO.: XXXXXXXX
 船型: 散货船 (GENERAL ARRANGEMENT)
 船东: 瓦特 (WAT)
 船厂: 瓦特 (WAT)
 日期: 2010.12.12

平台甲板
TWEEN DK.



底舱
TANK TOP



设计单位: 100000 瓦特 (WAT) SC8103-100-04
 船名: 瓦特 (WAT) HULL NO.: XXXXXXXX
 船型: 散货船 (GENERAL ARRANGEMENT)
 船东: 瓦特 (WAT)
 船厂: 瓦特 (WAT)
 日期: 2010.12.12



2017年12月22日

中国船级社 CHINA CLASSIFICATION SOCIETY 船用产品证书 CERTIFICATE OF MARINE PRODUCT

证书格式号/Form: P01.03-
HQ002063

证书编号/Certificate No. CQ17P00386

兹证明应 贵州钢绳股份有限公司 的申请,

下列产品经本社署名验船师检验,符合本证书注明标准的要求。

This is to certify that, upon request of
Guizhou Wire Rope Incorporated Company

the following products have been inspected by the undersigned the surveyor of the Society and are found to comply with the requirements of the specified standards.

制造厂名 贵州钢绳股份有限公司

Manufacturer Guizhou Wire Rope Incorporated Company

订货方 江苏泛舟船务有限公司

Purchaser Jiangsu Fanzhou Shipping Co.LTD

产品名称 钢丝绳索具

Product Steel Wire Rope Rigging

认可证书号/Cert.No.of Approval: CQ16W00009 图纸批准号/Approval No.of drawings: 无/Nil.

附加标志
Notations 无/Nil.

用于
Intended for 船舶与海上设施/Ships and Offshore Installations

船舶工程号
Hull No. 无/Nil.

产品使用限定
Restriction for application of product 无/Nil.


产品编号
Serial No. 17E672 (A)

产品检验标准/ Product Inspection Standard

1.中华人民共和国《船舶与海上设施法定检验规则》-海上拖航法定检验技术规则(1999)第2篇第5章
Technical Regulations for Statutory Survey of Ships and Offshore Installations of P.R.C-Towing Technical Regulation for Statutory Survey(1999) Chapter 5, Part Two.

产品检验标志/Marking

位置/Position : 在产品上/ On the product

标志样式/Type of Marking :  CCS钢印标志/ CCS steel stamp

发证日期
Date of issue 2017年6月22日
Jun. 22, 2017

验船师
Surveyor  Huang Qiong

本证书根据中国船级社《钢质海船入级规范》及有关程序规定签发。关于证书的有关规定见本证书背面的说明。当本证书包括多页纸张时,则所有证书页为一个整体,必须同时使用。每一页证书均须由本社盖章方为有效。证书复印件无效。任何单位和个人均不应摘录或节选本证书的部分内容。有关各方对所持证书的真实性有疑问时,可以向本社检验机构咨询。

This Certificate is issued pursuant to the Rules for Classification of Sea-going Steel Ships and related procedures of the Society. Refer to the back of the certificate for detailed requirements of the certificate. When the certificate consists of more than one page, all pages of the certificate are taken as a whole and are used simultaneously. No certificate page is valid without bearing the stamp of the Society and no copied form of the certificate is regarded as valid. Any part of the certificate is not to be extracted or abridged by any unit or individual in any form. Related parties who are doubted about the authenticity of the certificate may inquire of the Society or its offices.



中国船级社总部/CCS headquarters: 北京市东直门南大街9号船检大厦 邮编: 100007 电话/Tel: +86(10)58112288 传真/Fax: +86(10)58112811
CCS Mansion, 9 Dongzhimen Nan Da Jie, Beijing 100007, China 网址/Web Site: <http://www.ccs.org.cn>

本地检验机构/CCS Local Office: 中国船级社重庆分社 CCS Chongqing Branch 电话/Tel: 0086-023-63827124 传真/Fax: 0086-023-63842535

CQ87899990
N^o: 16719260

1. 证书适用条件

- 1.1 经 CCS 设计认可、型式认可或工厂认可的产品及其生产厂, CCS 将颁发产品设计认可、型式认可或工厂认可证书。当 CCS 规范要求产品证书的情况下, 认可证书不能替代产品证书。
- 1.1.1 设计认可系指 CCS 通过对产品图纸审查和原型/型式试验, 确认产品设计满足 CCS 规范要求和/或其他接受标准要求的评价过程。
- 1.1.2 型式认可系指 CCS 通过产品图纸审查、型式试验和现场审核, 以确认制造厂具备持续生产符合 CCS 规范要求和/或其他接受标准要求产品的能力和条件的评价过程。根据制造厂产品质量保证的能力和水平, 型式认可分为型式认可 A 和 B 两种模式。
- 1.1.3 工厂认可系指 CCS 通过文件/图纸资料审查、型式试验和现场审核, 以确认制造厂具备持续生产符合 CCS 规范要求和/或其他接受标准要求产品的能力和条件的评价过程。
- 1.2 入级和法定产品经 CCS 单件/单批检验完成后, CCS 将颁发产品证书或签署等效证明文件。
- 1.2.1 产品证书是由 CCS 验船师签发的文件, 以证明: a) 产品符合规范要求; b) 产品已进行规定的检验和试验; c) 检验样品取自检验产品本身; d) 产品的试验在验船师参加或根据特别商定的情况下进行。
- 1.2.2 等效证明文件是由制造厂出具并经 CCS 盖章和验船师签署的文件, 以证明: a) 产品符合规范要求; b) 产品已进行规定的检验和试验; c) 检验样品取自检验产品本身; d) 产品的试验在验船师参加或根据特别商定的情况下进行。
- 1.3 对于要求型式认可和/或工厂认可而不要求持有产品证书的入级和法定产品, 可由制造厂证明形式予以证明:
- 1.3.1 制造厂证明是由制造厂签发, 以证明: a) 该产品经 CCS 型式认可或工厂认可; b) 产品符合规范要求; c) 产品已进行规定的检验和试验; d) 检验样品取自检验产品本身; e) 产品的试验在制造厂授权部门代表在场的情况下进行。
- 1.4 规范和法定要求以外的产品经 CCS 单件/单批检验完成后, 由检验证书或试验证书予以记录和证明。
- 1.4.1 检验证书是由 CCS 验船师签署的文件, 以证明: a) 符合申请方确定的产品标准; b) 检验和试验经验船师见证和/或试验报告经验船师审查; c) 试验样品取自检验产品本身。
- 1.4.2 试验证书是由 CCS 验船师签署的文件, 以证明: a) 产品的试验在验船师在场下进行; b) 试验样品取自检验产品本身。

2. 证书的失效、暂停和撤销

CCS 通过认可、检验工作所签发的证书或相关的证明文件的失效、暂停和撤销, 见 CCS 《钢质海船入级规范》第 1 篇第 3 章第 1 节。

3. 责任

- 3.1 CCS 承担的认可/检验服务是在所涉及的产品设计方、制造方、拥有方、销售方、供应方、修理方、使用方以及其他方履行各自职责的基础上进行的。无论 CCS 及所属验船师采用何种认可/检验方式, 也不论在 CCS 名义下颁发、签署的任何报告、文件和证书在内容上如何, 均不意味着可减轻或解除上述任何方应承担的任何责任。
- 3.2 CCS 签发的与认可/检验有关的任何文件, 只反映检验当时的技术状况, 并不表明被认可的工厂和产品的所有权和知识产权归属。与被认可的工厂和产品的所有权和知识产权有关的任何争议, 与 CCS 无关。
- 3.3 CCS 的认可/检验不影响、替代与 CCS 授权或检验无关的各方对上述工厂的认可和发证, 并且不对与 CCS 授权或检验无关的各方负责, 不承担其未经应允而承认、接受 CCS 认可/检验所导致的法律和经济责任。
- 3.4 CCS 仅对由于自身疏忽行为而直接造成的合同关系方的损失或损害承担责任, 在任何情况下, CCS 均不对合同关系方的间接损失或随后引发的附加损失或损害承担责任, 也不对非合同关系方的任何损失承担责任。
- 3.5 尽管有上述规定, 如依法判定合同关系方所遭受的损失或损害, 仅仅是由于 CCS 或其雇员、代理人或 CCS 其他代表方的疏忽行为造成的, CCS 将承担责任, 并将支付赔偿, 但此赔偿的数额不超过该项服务收费的 5 倍, 且最大不超过人民币 200 万元。但如该损失或损害系由如下行为造成, CCS 将不承担任何责任:
- 1) CCS 雇员超越其受雇权限的行为;
 - 2) CCS 代理人或其他代表方, 超越 CCS 对其书面授权范围的行为。
- 3.6 对 CCS 承担责任的损失或损害的索赔, 应以书面形式, 在损害最初发现或损失形成的 6 个月内提出, 否则将被视为彻底放弃索赔权。

4. 适用法律和仲裁

- 4.1 本证书条款的生效、解释、执行、争议的解决均适用中华人民共和国法律。
- 4.2 除与 CCS 另有约定外, 凡因与 CCS 提供的服务有关的任何争议, 均应提交中国海事仲裁委员会, 按照申请仲裁时该会现行有效的仲裁规则进行仲裁。仲裁裁决是最终的, 对争议当事双方均有约束力。

1. THE APPLICATION OF CERTIFICATES

- 1.1 After Approval, Certificate of Design Approval, Certificate of Type Approval or Certificate of Works Approval will be issued by CCS for the products and manufacturers. Where a product certificate is required by CCS rules, the Approval Certificate cannot replace it.
- 1.1.1 **Design Approval** means the evaluation process to confirm that the product design is in compliance with the requirements of CCS Rules and/or other accepted standards through plan approval and prototype/type test.
- 1.1.2 **Type Approval** means the evaluation process to confirm the approved manufacturer's capability of continuously producing products which are in compliance with the requirements of CCS Rules and/or other accepted standards through product plan approval, type test and on-site audit. Type approval consists of two modes, type approval A and type approval B, which shall be granted to the manufacturer according to manufacturer's ability and level in product quality assurance.
- 1.1.3 **Works Approval** means the evaluation process to confirm the manufacturer's capability of continuously producing products which are in compliance with the requirements of CCS Rules and/or other accepted standards through product plan approval, type test and on-site audit.
- 1.2 A unit/batch inspection of classed or statutory products is to be documented as Certificate of Product or Equivalent document by CCS:
- 1.2.1 **Certificate of Product** is issued by the Surveyor to show that: i) the product complies with rules; ii) required inspection and test have been carried out; iii) the sample is taken from the product to be inspected; iv) the product has been tested in the presence of the Surveyor or in a specially agreed condition.
- 1.2.2 **Equivalent Document** is issued by the manufacturer and endorsed by the Surveyor to show that: i) the product complies with rules; ii) required inspection and test have been carried out; iii) the sample is taken from the product to be inspected; iv) the product has been tested in the presence of the Surveyor or in a specially agreed condition.
- 1.3 The classed and statutory products of which the type approval and/or works approval is required but the products certificate is not required, may be certified as Manufacturer's document:
- 1.3.1 **The Manufacturer's Document** is issued by the manufacturer to show that: i) the product is type approved or works approved by CCS; ii) the product complies with rules; iii) required inspection and test have been carried out; iv) the sample is taken from the product to be inspected; v) the product has been tested in the presence of the department representative authorized by the manufacturer.
- 1.4 A unit/batch inspection Products other than those specified in rules or statutory requirements is to be documented as Inspection Certificate or Test Certificate:
- 1.4.1 **Inspection Certificate** is issued by the Surveyor to show that: i) the product standards as determined by the applicant have been complied with; ii) the inspection and test have been witnessed by the Surveyor and/or the test report has been reviewed by the Surveyor; iii) the sample is taken from the product to be inspected.
- 1.4.2 **Test Certificate** issued by the Surveyor to show that: i) the product has been tested in the presence of the Surveyor; ii) the sample is taken from the product to be inspected.

2. INVALIDATION, SUSPENSION AND CANCELLATION OF CERTIFICATE

Invalidation, suspension and cancellation of the certificates or equivalent documents issued by CCS by means of approval or certification are specified in Section 1, Chapter 3, Part 1 of CCS Rules for Classification of Sea-going Steel Ships.

3. LIABILITY

- 3.1 The service of approval / inspection undertaken by CCS is carried out on the basis that the designers, manufacturers, owners, sellers, suppliers, repairers, operators and other parties fulfill their respective responsibilities. The contents of any reports, documents and certificates issued by CCS cannot diminish any liability of any party mentioned above or absolve it therefrom, whatever the module of approval/inspection adopted by CCS and its surveyors.
- 3.2 Any approval/inspection-related documents issued by CCS only reflect the status at the time when the approval/inspection is carried out. They do not constitute the description for ownership and intellectual property rights of the approved/inspected factory and product. This Society should not be affected by any dispute over ownership and intellectual property rights of the approved/inspected factory and product.
- 3.3 The approval/inspection of CCS does not affect and replace any approval and certification of the manufacturer by any parties that bear no relation with this Society's authorization or survey and therefore takes no responsibility for these parties. CCS does not undertake any legal and economic liabilities arising from accepting this Society's certificate without prior permission from this Society.
- 3.4 CCS will be liable only for the loss or damage of contract parties resulting directly from its negligent act. In no event shall CCS be liable for any indirect or consequential losses or damage, and any loss of non-contract parties.
- 3.5 Notwithstanding the previous paragraph, CCS will be liable for the loss or damage due to negligent act judicially attributed exclusively to CCS and its employees, agents or other parties acting on behalf of CCS. And in no case shall the amount of this liability exceed five times the fee(s) charged by CCS in respect of the service(s) in question or 2,000,000 RMB in maximum. CCS liability for the loss or damage is specially excluded when such loss or damage arises out of an act:
- (1) by an employee of CCS acting outside the terms or scope of his/her employment; or
 - (2) by any agent or other parties acting on behalf of CCS, when such act exceeds the authority granted in writing by CCS to such agent or parties.
- 3.6 Any claim for any loss or damage set forth above is to be made in writing within six months of the date the damage first discovered or the loss occurred; failure of doing so will be deemed as an absolute waiver of this right.

4. APPLICABLE LAWS AND ARBITRATION

- 4.1 The laws of the People's Republic of China shall apply to the coming into force, explanation, implementing, and resolution of dispute of the clause of the certificate.
- 4.2 Unless otherwise agreed with CCS, any dispute of whatsoever nature in respect to the service(s) provided shall be referred to China Maritime Arbitration Commission and arbitrated in accordance with its arbitration rules effective at the time of request for arbitration. The arbitration award shall be final and binding upon both interested parties.

产品明细/ Product Description

钢丝绳索具 型式/Type	: 单头闭式索节 Single end of closed type socket
数量/Quantity	: 1 件/Pcs
单根长度/总长度/Single Base Length / Total Length	: 1200 m
验证试验负荷/Proof Test Load	: 1979 kN
钢丝绳结构/Construction of Wire Rope	: 6×41WS+IWR
钢丝绳直径/Dia. of steel wire rope	: 70 mm
钢丝绳公称抗拉强度/Nominal tensile strength for steel wire rope	: 1870 N/mm ²

产品检验方式/ Method of Product Inspection

按照规范逐件检验的产品/The product inspected one by one in term of the rules:
本证书所述产品由本社验船师根据本社规范规定按批准的产品检验计划逐件进行检验, 并在检验合格后颁发船用产品证书。
The products described in the certificate have been inspected one by one by the Surveyor of the Society in accordance with the approved product inspection scheme, and the Marine Product Certificate is issued upon satisfactory inspection.

原材料和零部件的检验/ Inspection of Material and Components

该产品的如下原材料/零部件业经本社检验 The following materials and components of the product were inspected by the Society:
索节/Socket: JY17P00492_01 钢丝绳/Steel wire rope: CQ17P00369_04

产品如下原材料和零部件由本社认可的制造厂生产/The following materials and components of the product were manufactured by the factory approved by the Society: 无/Nil.

责任声明/ Statement of Responsibility

本社的检验不影响、替代与本社授权或检验无关的各方对上述工厂的认可和发证, 并且不对与本社授权或检验无关的各方负责, 不承担其未经应允而承认、接受本社检验所导致的法律和经济责任。
The inspection of the Society does not affect and replace any approval and certification of the manufacturer by any parties that bear no relation with this Society's authorization or survey and therefore takes no responsibility for these parties. The Society does not undertake any legal and economic liabilities arising from accepting this Society's certificate without prior permission from this Society.

其他/Others

无/Nil.

中国船级社重庆分社
CCS Chongqing Branch



*****本证书正文完/ End of Text*****



贵州钢绳股份有限公司

GUIZHOU WIRE ROPE INCORPORATED COMPANY



钢丝绳产品质量证明书

PRODUCT CERTIFICATE OF STEEL WIRE ROPE

辛洋

中国船级社认可证书编号/CCS Approval Cert. No.: CQ15W00004

产品依据: CCS《材料与焊接规范》和GB/T20067-2006

质证书编号/Cert. No.: C17-0247

Product standard: CCS Rules & GB/T20067-2006

订货单位: 贵州钢绳股份有限公司上海销售分公司

合同号/Contract No.: 2017上海113

Customer: Guizhou Wire Rope Incorporated Company Shanghai Sales Branch

产品编号/Product No.: 17E672(A)

钢丝绳产品明细/Product List of Rope

结构/Construction: 6X41WS+IWR	公称直径/Nominal Diameter: 70.0 mm
抗拉强度/Tensile strength: 1870 N/mm ²	镀锌层级别/Zinc coating grade: CCS1级Grade1
韧性/Tenacity: 合格	捻法/Lay direction: 右交互捻 R.H.R.Lay
净重/Net weight: 26010 kg	长度/Length: 1200 m
毛重/Gross weight: 27440 kg	用于/Intended for: 船用 Use of ship

钢丝绳试验结果(Test Results of Steel Wire Rope)

钢丝绳直径允许偏差/TRD (mm)	70.0 ± 4/1 %		钢丝绳实测直径/AMRD (mm)	72.4					
钢丝绳外观质量/Wire rope visual quality	钢丝绳外观不存在GB/T21965中列出的制造缺陷。The visual of wire rope hasn't the listed defects in GB/T21965.								
钢丝绳公称直径/Wire nominal diameter (mm)	2.28	3.00	3.30	3.50					
钢丝绳公称抗拉强度/WNTS (N/mm ²)	1870	1870	1870	1870					
钢丝绳试验项目/Tests item on wires	标准值 Special value	实测结果 Test results	标准值 Special value	实测结果 Test results	标准值 Special value	实测结果 Test results			
	钢丝绳抗拉强度/WTS (N/mm ²)	≥1820	1916-2150	≥1820	1900-2081	≥1820	1941-2064	≥1820	1872-1988
弯曲次数/No. of bending (No./180°)	—	—	—	—	—	—	—	—	
扭转次数/No. of torsion (No./360°)	≥21	28-31	≥16	20-27	≥16	24-29	≥13	15-27	
打结率/Ratio of knotting (%)	—	—	—	—	—	—	—	—	
镀锌层试验 Zinc-coating	锌层质量/Mass (g/m ²)	≥150	合格(OK)	≥165	合格(OK)	≥190	合格(OK)	≥190	合格(OK)
	卷绕试验/Wrapping test	1: 6	合格(OK)	1: 6	合格(OK)	1: 6	合格(OK)	1: 6	合格(OK)
钢丝绳最小破断拉力/MBL	3260		kN	钢丝绳实测破断拉力/AMBL	3340		kN		

说明/Explanation:



备注/Remarks:
铭牌和绳尾铅封上标有:
On the nameplate and
seal of rope end stamped

本公司钢丝绳按照CCS规范及相关标准进行生产制造并验收合格。生产制造与CCS认可条件保持一致, 试验项目及试验数据真实有效, 本公司对产品质量负责。

Our wire rope were manufactured according to CCS rules and product standard, and wire rope were inspected up to CCS approval and acceptance technical conditions. the manufacturing process of the wire rope were compliance with the approval conditions. The test items and datas are true and effective. we are liable for the quality issues of the wire rope.

验船师签署:
Surveyor signature:

2017.5.22

with:



公司质监部门印章
Stamp of Q.C.Dept.

本产品质量证明书盖章有效, 复印无效。 This certificate is effective with stamp and copy invalid.

质量部负责人/Q.C.Chief:

李成刚

审核员/Auditor:

Yeouyul

检验员/Inspector: 彭彦燕

日期/Date: 2017.05.17



中国船级社
Certificate No.: CQ11W00003
中国船级社



Lloyd's Register of Shipping
Certificate No.: MD00/0624/0006/11
英国劳埃德船级社



Certificate No.: AMM-7000
挪威船级社



Certificate number
SMS.W.II./61716/C.0
法国船级社



Certificate No.: SHI20312-RP001
韩国船级社



Certificate No.: 0014/IN-IST-15
CE认证

钢丝绳使用注意事项

(Precautions when the rope is used)

● 钢丝绳放绳与卷绳方式 (The method for both pay-off and take-up of wire rope.)

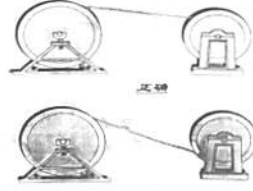
钢丝绳放绳方式见 (图1), 钢丝绳卷绳方式见 (图2)

The method for pay-off of wire rope See(chart 1)The method for tak-up of wire rope See(chart 2)



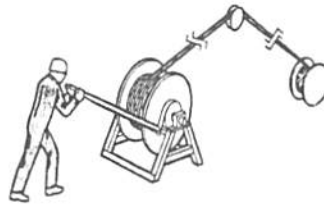
The upside part of figure is right while the downside one is wrong.

(图1) (chart 1)

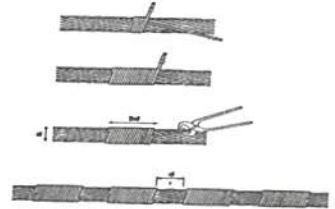


The upside part of figure is right while the downside one is wrong.

(图2) (chart 2)



(图3) (chart 3)



(图4) (chart 4)

● 钢丝绳的多层卷取与切头捆扎 (Multi-layer involution of steel wire rope, cutting and enlacing)

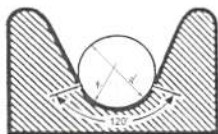
钢丝绳在卷筒多层卷绕时, 应在放绳轮与卷筒之间加一个张力装置, 保证钢丝绳均匀紧密地缠卷到卷筒上见 (图3)。钢丝绳需切断使用时, 切头处两端应用铁丝或小绳股捆扎, 捆扎长度至少为两倍钢丝绳直径 (d), 满充式钢丝绳、多层股钢丝绳、多层丝单股钢丝绳切头处两端应各捆扎两处见 (图4)。

When winding wire rope in multi-layer, there should be a tension unit to ensure the wire rope to wind on the block in uniformity and tightness order(see chart 3). The cutting and enlacing way: using iron wire or small strands to enlase both ends of the cutting points. The length of enlacing should be at least 2 times of the rope diameter(d). For CFRC wire rope and multi-layer wire rope and multi-layer spiral rope there should be 2 enlacing on both ends of cutting point(see chart 4).

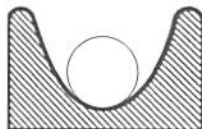
● 钢丝绳在使用中与轮槽的关系 (The connection between wheel grave and wire rope when used)

合适的轮槽与钢丝绳接触应为 (图5) 所示。轮槽过大 (图6), 会加剧钢丝绳及金属绳芯疲劳断丝; 轮槽过小 (图7), 会严重磨损钢丝绳。轮槽半径 (R) 与钢丝绳公称直径 (D) 比 $R/D=0.525\sim0.550$

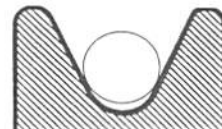
The suitable contact relation for wheel groove and wire rope should be as the (chart5) showing. Too big wheel groove (chart 6) will make wire rope and rope core to break with fatigue; too small wheel groove (chart 7) will wear and tear the wire too much.The ratio of wheel radii and the nominal diameter of wire rope should be: $R/D: 0.525\sim0.550$



(图5) 正确 (chart 5) right



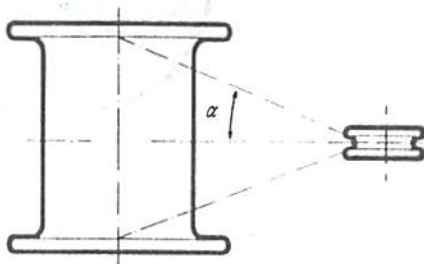
(图6) 错误 (chart 6) wrong



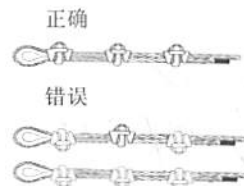
(图7) 错误 (chart 7) wrong

● 钢丝绳与卷筒夹角见 (图8), 无槽卷筒夹角 $\alpha < 1.5$ 度, 有槽卷筒夹角 $\alpha < 2.5$ 度。钢丝绳绳卡的使用方法: 见 (图9)。

The angle for rope and block see (chart 8), without groove, the angle should be $< 1.5^\circ$, with groove, the angle should be $< 2.5^\circ$. Wire rope clip using way see (chart 9)



(图8) (chart 8)



The upside part of figure is right while the downside one is wrong.

(图9) (chart 9)

● 地址: 中国 贵州省遵义市桃溪路47号 Add:No. 47,Taoxi Road,Zunyi City, Guizhou Province China

● 销售部电话: 0851-28419444 Tel of Sale Department:+86-851-28419444 邮政编码 Postcode: 56300

● 销售部传真: 0851-28422172 Fax of Sale Department:+86-851-28422172 网址: www.gzgsgf.com.cn



证书格式号/Form: E01.02-
HQ002063

中国船级社 CHINA CLASSIFICATION SOCIETY

船用产品试验证书 TEST CERTIFICATE OF MARINE PRODUCT

证书编号/Certificate No. QH13P00028_13

兹证明应 巨力索具股份有限公司 的申请，
本证书所述产品所进行的下列试验项目经本社署名验船师见证。

This is to certify that, upon the request of
JULI SLING CO.,LTD.

the following test items for the products stated in the certificate are witnessed by the undersigned surveyor to the Society.

制造厂名 巨力索具股份有限公司
Manufacturer JULI SLING CO.,LTD.

订货方 江苏省镇江船厂(集团)有限公司
Purchaser Jiangsu Zhenjiang Shipyard(Group) Co., Ltd.

产品名称 索具
Product RIGGING

产品编号 见产品明细/See Product Description
Serial No.

试验地点 上述制造厂/The Above Mentioned Manufacturer
Place of Test

试验时间 2013年1月30日
Date of Test Jan.30,2013

发证日期 2013年2月5日
Date of issue Feb. 5, 2013



验船师 张念武
Surveyor Zhang Nianwu

本证书根据中国船级社《钢质海船入级规范》及有关规定签发。关于证书的有关规定见本证书背面的说明。当本证书包括多页纸张时，则所有证书页为一个整体，必须同时使用。每一页证书均须由本社盖章方为有效。证书复印件无效。任何单位和个人均不应摘录或节选本证书的部分内容。有关各方对所持证书的真实性有疑问时，可以向我社检验机构咨询。
This Certificate is issued pursuant to the Rules for Classification of Sea-going Steel Ships and related procedures of the Society. Refer to the back of the certificate for detailed requirements of the certificate. When the certificate consists of more than one page, all pages of the certificate are taken as a whole and are used simultaneously. No certificate page is valid without bearing the stamp of the Society and no copied form of the certificate is regarded as valid. Any part of the certificate is not to be extracted or abridged by any unit or individual in any form. Related parties who are doubted about the authenticity of the certificate may inquire of the Society or its offices.



中国船级社总部/CCS headquarters: 北京市东直门南大街9号船检大厦 邮编: 100007 电话/Tel: +86(10)58112288 传真/Fax: +86(10)58112811
CCS Mansion, 9 Dongzhimen Nan Da Jie, Beijing 100007, China 网址/Web Site: <http://www.ccs.org.cn>
本地检验机构/CCS Local Office: 中国船级社秦皇岛分社 CCS Qinhuangdao Branch 电话/Tel: +86(335)3235031 传真/Fax: +86(335)3235068

No. QH14819281
10755631

产品明细/ Product Description

卸扣/Shackle	: 1600kN
型式/Type	: DK12120283~DK12120286
产品编号/Serial No.	: 4 件/Pcs
数量/Quantity	: 3200 kN
验证试验负荷/Proof Test Load	

试验项目及结果/ Scope of Testing and the Result

验证负荷试验/Proof Load Testing:

加载至上述试验负荷，保载5分钟，上述产品无异常。
Loaded to above test load and kept 5 minutes, the above mentioned products were in normal.

此证书仅证明上述试验项目合格。

The certificate is only to certify that, the above test items have been carried out and found satisfactory.

此证书所述产品不适用于下述用途:

The products covered by this certificate are not intended for:

(1) 船舶与海上设施的系泊与拖带

Mooring and towing of ships and offshore installations.

(2) 按照CCS规范要求，需持有船用产品证书的起重设备及其部件

Lifting appliances and associated components, as specified in CCS rules, for which marine products certificate are required.

责任声明/ Statement of Responsibility

本社的检验不影响、替代与本社授权或检验无关的各方对上述工厂的认可和发证，并且不对与本社授权或检验无关的各方负责，不承担其未经应允而承认、接受本社检验所导致的法律和经济责任。

The inspection of the Society does not affect and replace any approval and certification of the manufacturer by any parties that bear no relation with this Society's authorization or survey and therefore takes no responsibility for these parties. The Society does not undertake any legal and economic liabilities arising from accepting this Society's certificate without prior permission from this Society.

中国船级社秦皇岛分社

CCS Qinhuangdao Branch



*****本证书正文完/ End of Text*****





证书格式号/Form: E01.02-
HQ002063

中国船级社
CHINA CLASSIFICATION SOCIETY
船用产品试验证书
TEST CERTIFICATE OF MARINE PRODUCT

证书编号/Certificate No. QH13P00028_12

兹证明应 巨力索具股份有限公司 的申请，
本证书所述产品所进行的下列试验项目经本社署名验船师见证。

This is to certify that, upon the request of
JULI SLING CO.,LTD.

the following test items for the products stated in the certificate are witnessed by the undersigned surveyor to the Society.

制造厂名 巨力索具股份有限公司
Manufacturer JULI SLING CO.,LTD.

订货方 江苏省镇江船厂(集团)有限公司
Purchaser Jiangsu Zhenjiang Shipyard(Group) Co., Ltd.

产品名称 索具
Product RIGGING

产品编号 见产品明细/See Product Description
Serial No.

试验地点 上述制造厂/The Above Mentioned Manufacturer
Place of Test

试验时间 2013年1月30日
Date of Test Jan.30,2013

发证日期 2013年2月5日
Date of issue Feb. 5, 2013



验船师 张念武
Surveyor Zhang Nianwu

本证书根据中国船级社《钢质海船入级规范》及有关程序规定签发。关于证书的有关规定见本证书背面的说明。当本证书包括多页纸张时，则所有证书页为一个整体，必须同时使用。每一页证书均须由本社盖章方为有效。证书复印件无效。任何单位和个人均不应摘录或节选本证书的部分内容。有关各方对所持证书的真实性有疑问时，可以向本社检验机构咨询。
This Certificate is issued pursuant to the Rules for Classification of Sea-going Steel Ships and related procedures of the Society. Refer to the back of the certificate for detailed requirements of the certificate. When the certificate consists of more than one page, all pages of the certificate are taken as a whole and are used simultaneously. No certificate page is valid without bearing the stamp of the Society and no copied form of the certificate is regarded as valid. Any part of the certificate is not to be extracted or abridged by any unit or individual in any form. Related parties who are doubted about the authenticity of the certificate may inquire of the Society or its offices.



中国船级社总部/CCS headquarters: 北京市东直门南大街9号船检大厦 邮编: 100007 电话/Tel: +86(10)58112288 传真/Fax: +86(10)58112811
CCS Mansion, 9 Dongzhimen Nan Da Jie, Beijing 100007, China 网址/Web Site: <http://www.ccs.org.cn>
本地检验机构/CCS Local Office: 中国船级社秦皇岛分社 CCS Qinhuangdao Branch 电话/Tel: +86(335)3235031 传真/Fax: +86(335)3235068

N. QH91050850
10156630

产品明细/ Product Description

卸扣/Shackle	: 1800kN
型式/Type	: DK12120279~DK12120282
产品编号/Serial No.	: 4 件/Pcs
数量/Quantity	: 3600 kN
验证试验负荷/Proof Test Load	

试验项目及结果/ Scope of Testing and the Result

验证负荷试验/Proof Load Testing:

加载至上述试验负荷，保载5分钟，上述产品无异常。
Loaded to above test load and kept 5 minutes, the above mentioned products were in normal.

此证书仅证明上述试验项目合格。
The certificate is only to certify that, the above test items have been carried out and found satisfactory.

此证书所述产品不适应于下述用途:

The products covered by this certificate are not intended for:

(1) 船舶与海上设施的系泊与拖带

Mooring and towing of ships and offshore installations.

(2) 按照CCS规范要求，需持有船用产品证书的起重设备及其部件

Lifting appliances and associated components, as specified in CCS rules, for which marine products certificate are required.

责任声明/ Statement of Responsibility

本社的检验不影响、替代与本社授权或检验无关的各方对上述工厂的认可和发证，并且不对与本社授权或检验无关的各方负责，不承担其未经应允而承认、接受本社检验所导致的法律和经济责任。
The inspection of the Society does not affect and replace any approval and certification of the manufacturer by any parties that bear no relation with this Society's authorization or survey and therefore takes no responsibility for these parties. The Society does not undertake any legal and economic liabilities arising from accepting this Society's certificate without prior permission from this Society.

中国船级社秦皇岛分社

CCS Qinhuangdao Branch

*****本证书正文完/ End of Text*****

