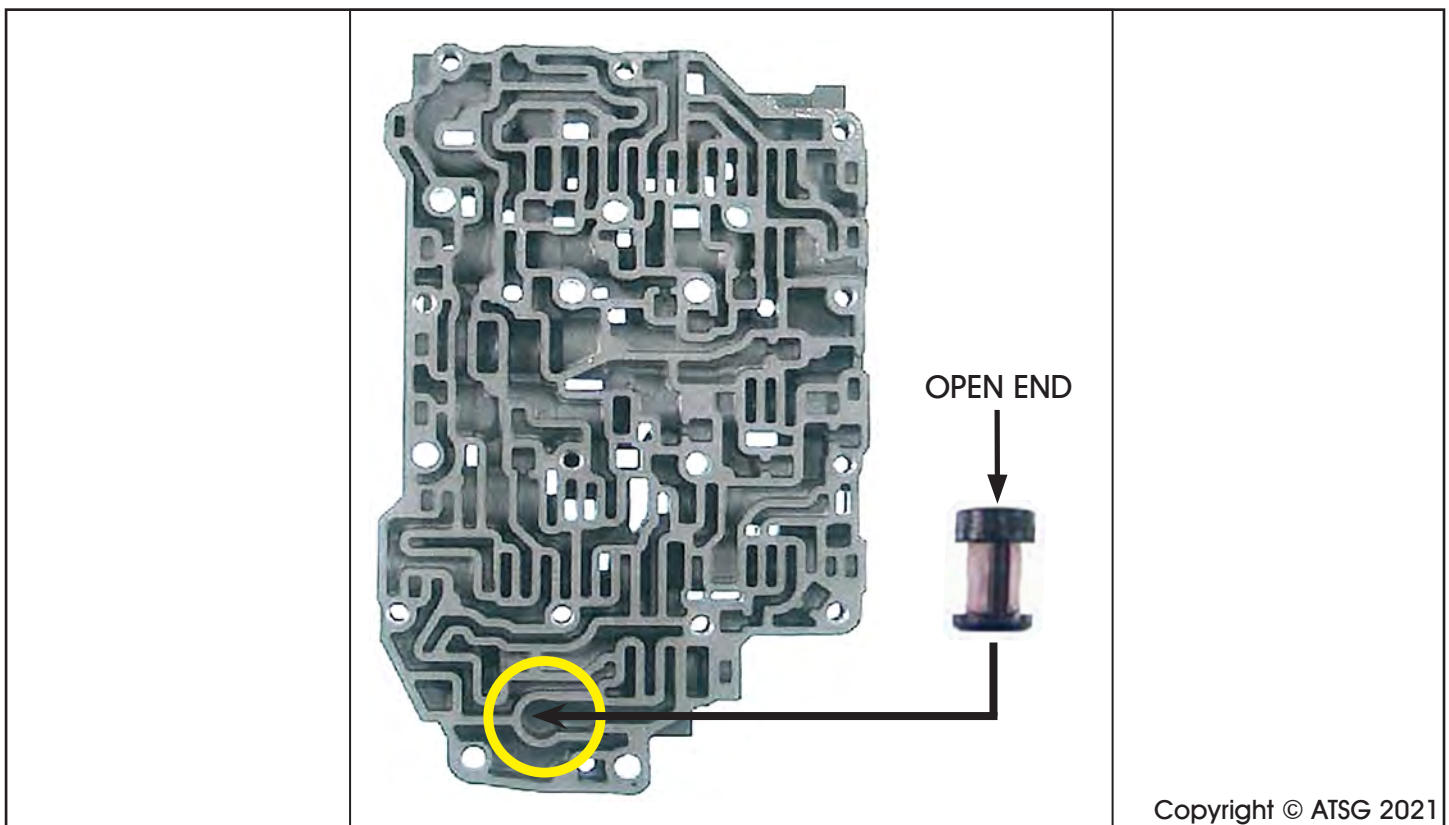


### TOYOTA U151/U251 WRONG GEAR STARTS/NO SHIFT

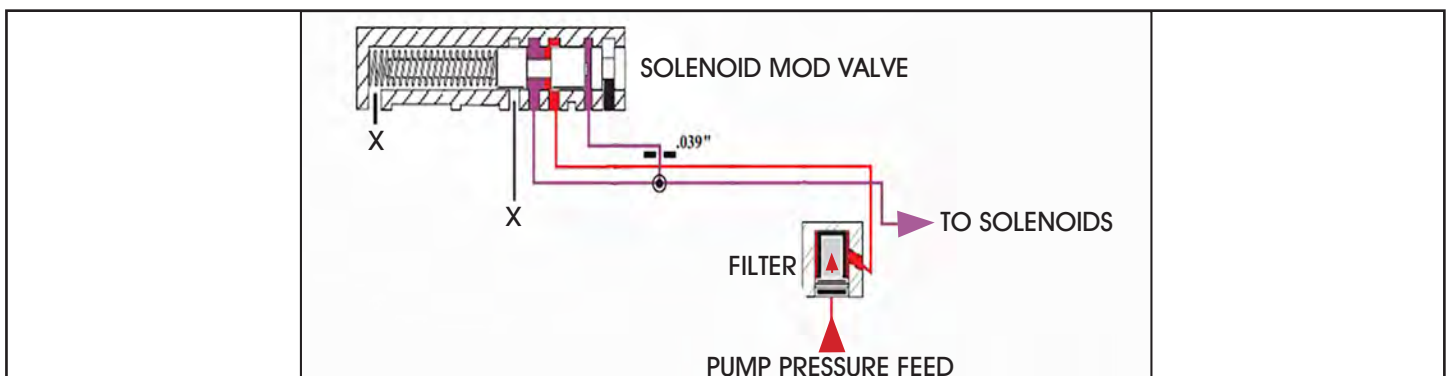
**COMPLAINT:** After valve body repairs or overhaul the transmission has wrong gear starts and will not shift. The vehicle may set solenoid performance or gear ratio codes.

**CAUSE:** The solenoid modulator valve filter is installed upside down. When the filter is upside down it will not allow pump pressure feed into the solenoid modulator valve. See figures 1 and 2.

**CORRECTION:** Install the filter with the open end facing the separator plate.



**Figure 1**



**Figure 2**

