



Technical Service Information

2004-UP FORD 4F50N TRANSAXLE NO MOVE CONDITION

COMPLAINT: A 2004 and up Ford Motor Company vehicle equipped with the 4F50N Transaxle may exhibit a no move condition in both forward and reverse ranges.

CAUSE: One possible cause for this condition may be that during overhaul, or Valve Body exchange, a Valve body for a 2001-2003 4F50N was installed on the 2004 unit.

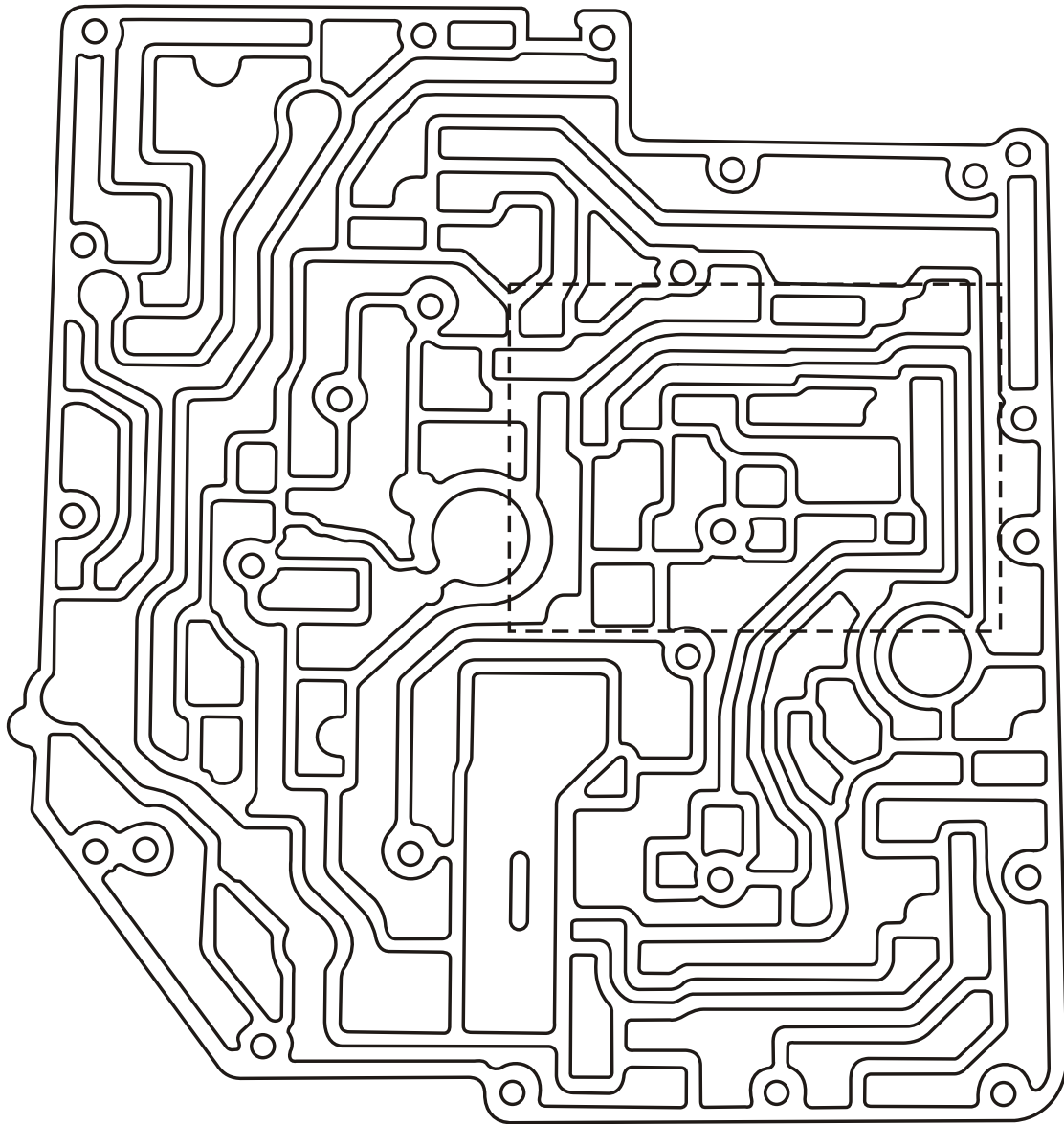
Explanation: In the model year of 2004, vast hydraulic changes were made to the Case Cover, Valve Body, and the Pump assembly. These changes were made to increase the durability of this unit. Figure 1 will show the passages in the 2000-2003 Case Cover. Figure 2 will show the passages in the 2004-up Case Cover. Figure 3 will show the passages in the 2000-2003 Valve Body, Case Cover side. Figure 4 will show the 2004-up Valve Body passages, Case cover side. Figure 5 will show the 2000-2003 Valve Body passages, Oil Pump side. Figure 6 will show the 2004-up Valve Body passages, Oil Pump side. Figure 7 will show the 2000-2003 Oil pump passages. Figure 8 will show the 2004-up Oil Pump passages.

As you can see from the illustrations, the worm tracks on the 2000-2003 castings and checkball locations are totally different than those on the 2004-up units. The bolt locations remained the same on the 2000-2003, and the 2004-up units.

None of the parts listed will interchange with each other, either individually or as a set.

CORRECTION: Use the illustrations in figures 1-8 to identify the proper castings for 2000-2003 and 2004-up. The Rough Forge Numbers will be added with each illustration to aid in proper Case cover, Valve Body, and Oil Pump assembly and checkball identification.

2000-2003 Case Cover Passages

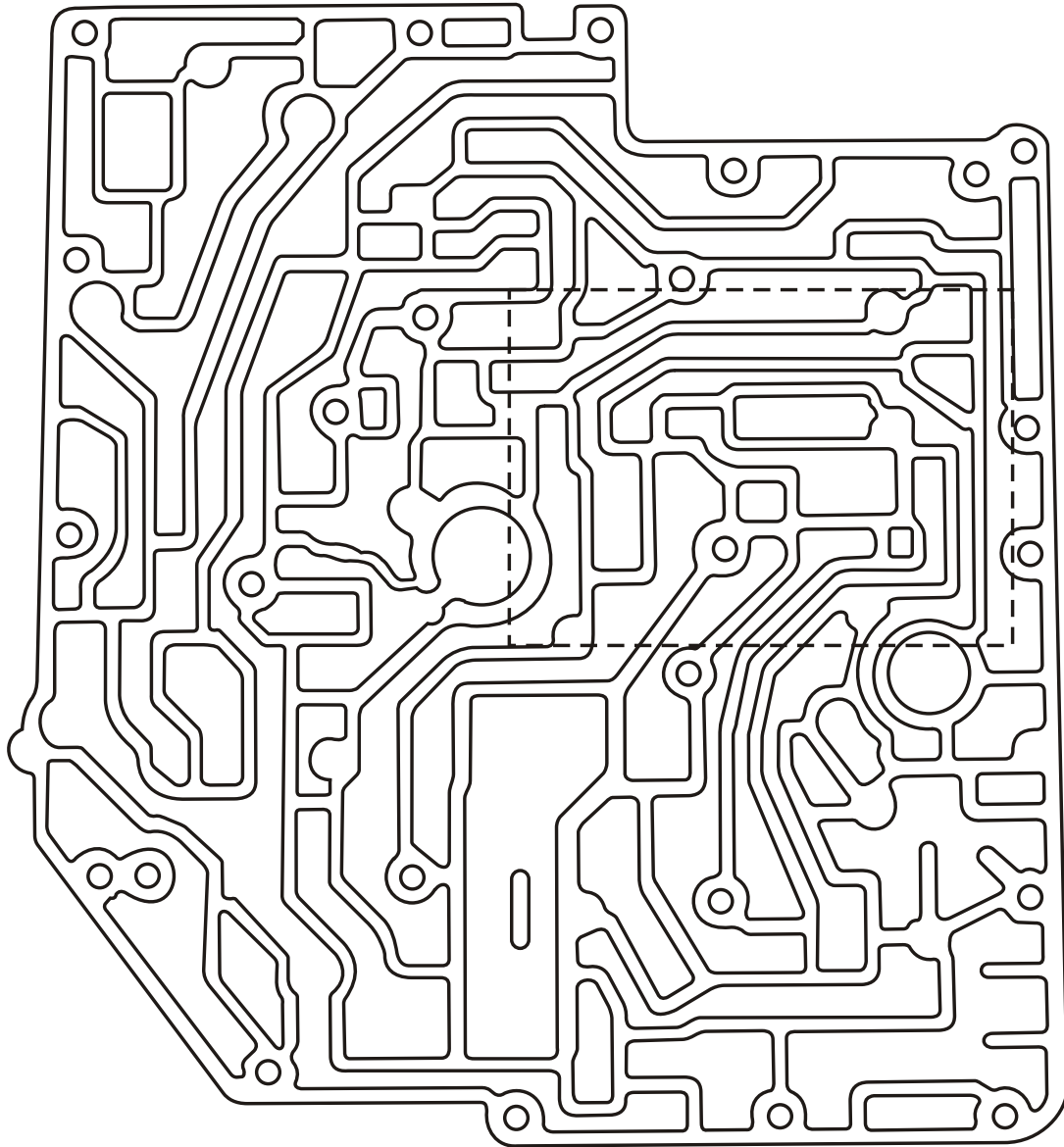


Case Cover Casting Number RF-YF1P

Copyright © 2008 ATSG

Figure 1

2004-Up Case Cover Passages



Case Cover Casting Number RF-4F1P

Copyright © 2008 ATSG

Figure 2

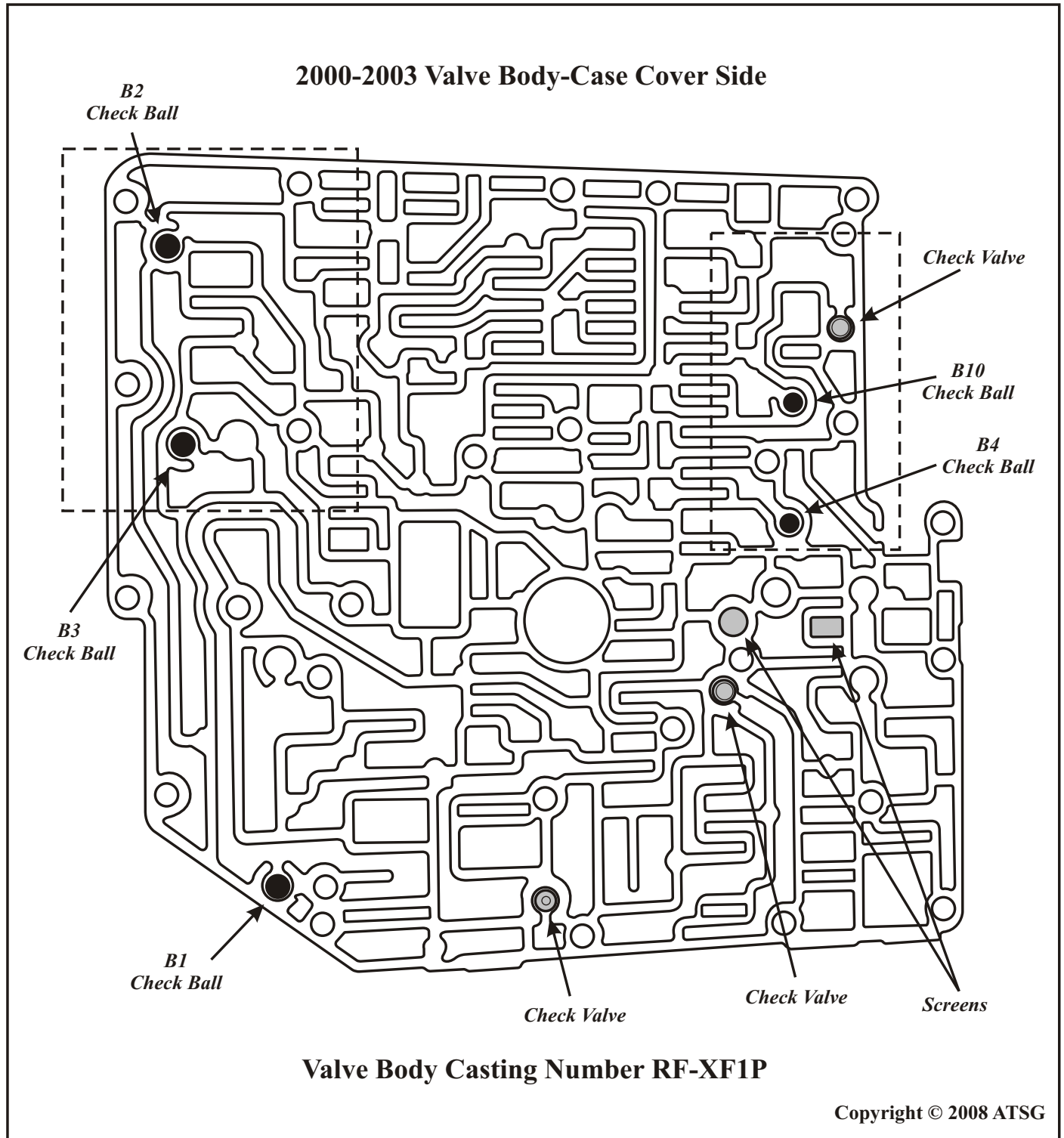
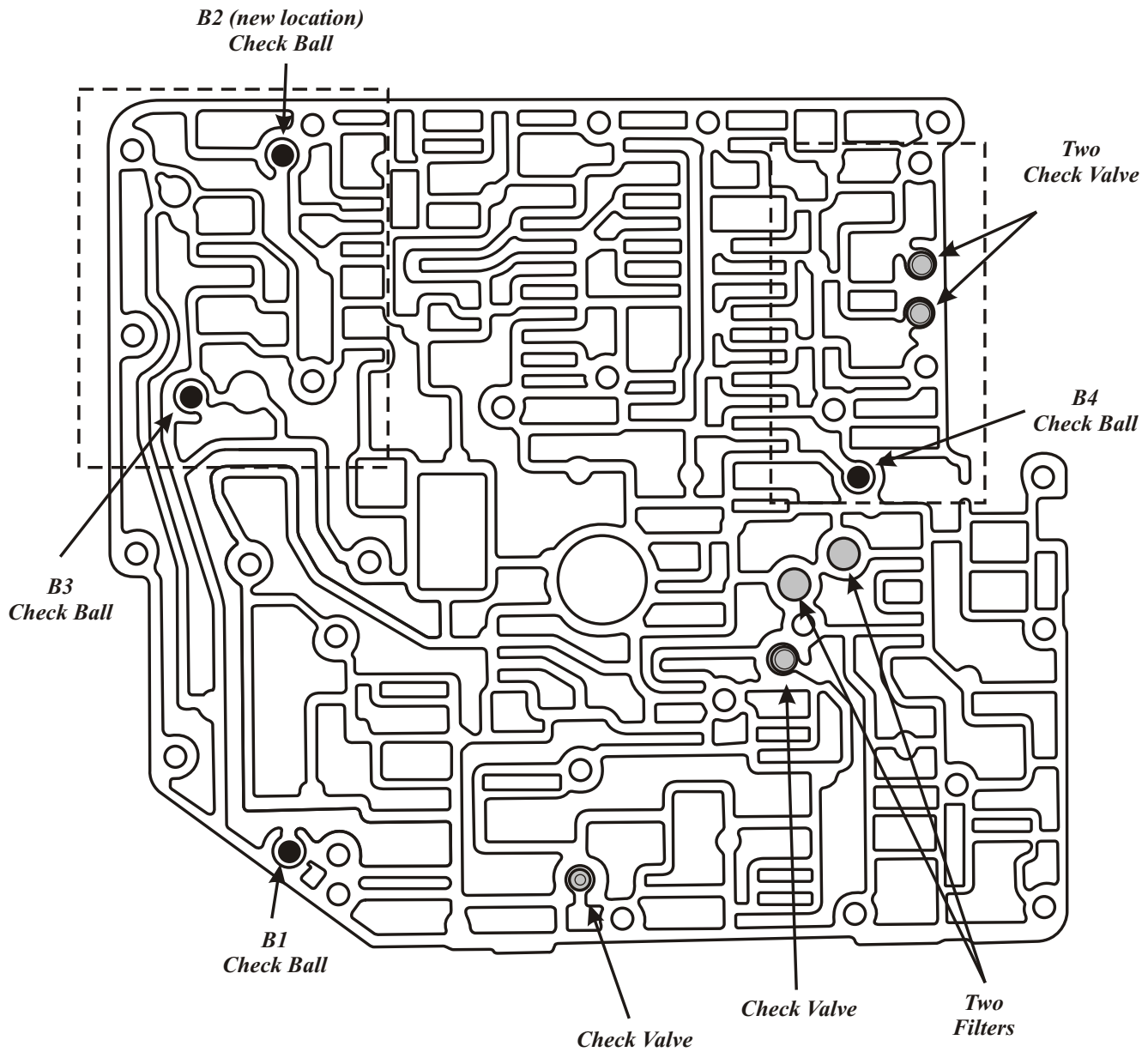


Figure 3

2004-Up Valve Body-Case Cover Side

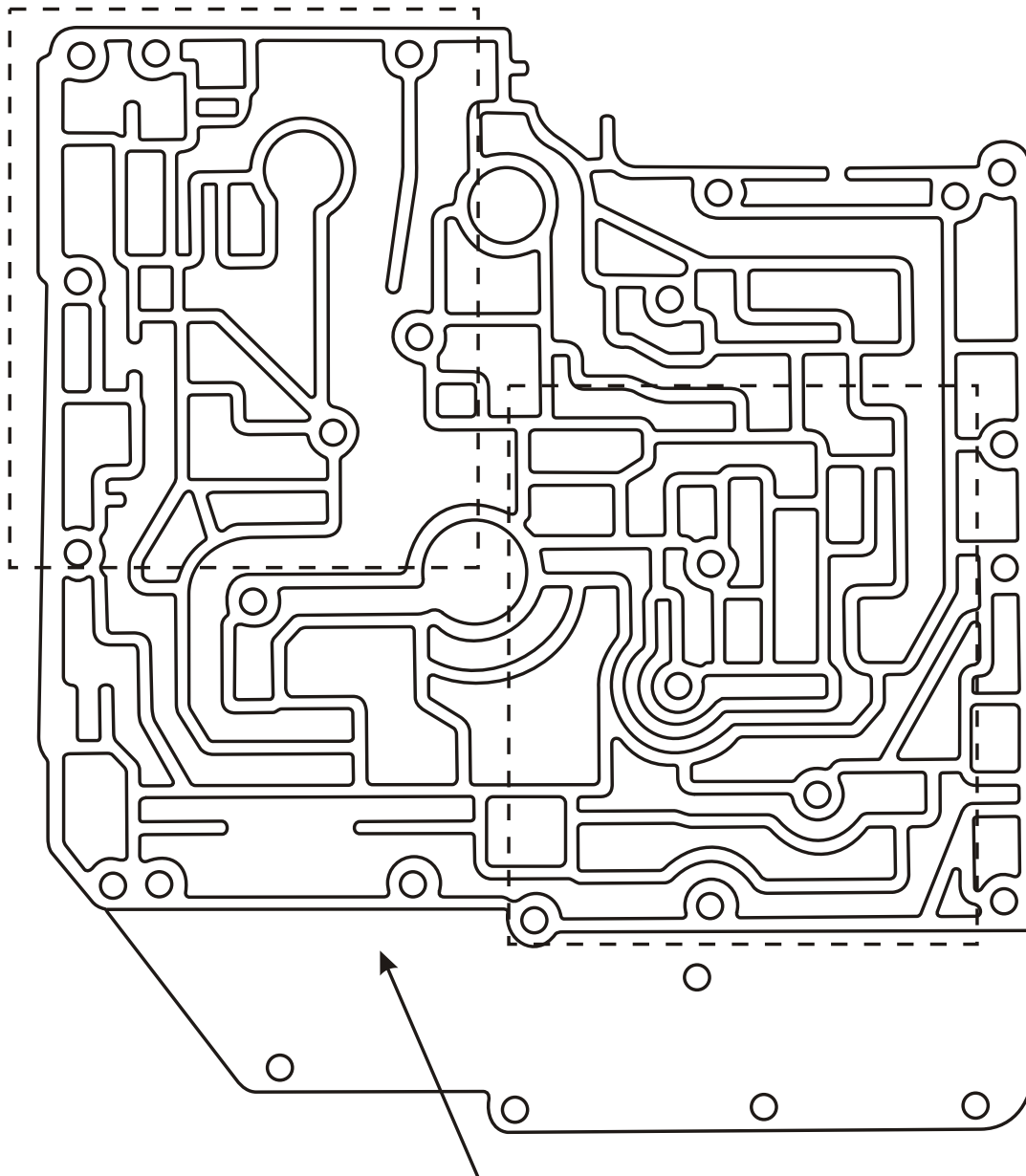


Valve Body Casting Number RF-4F1P

Copyright © 2008 ATSG

Figure 4

2000-2003 Valve Body-Oil Pump Side

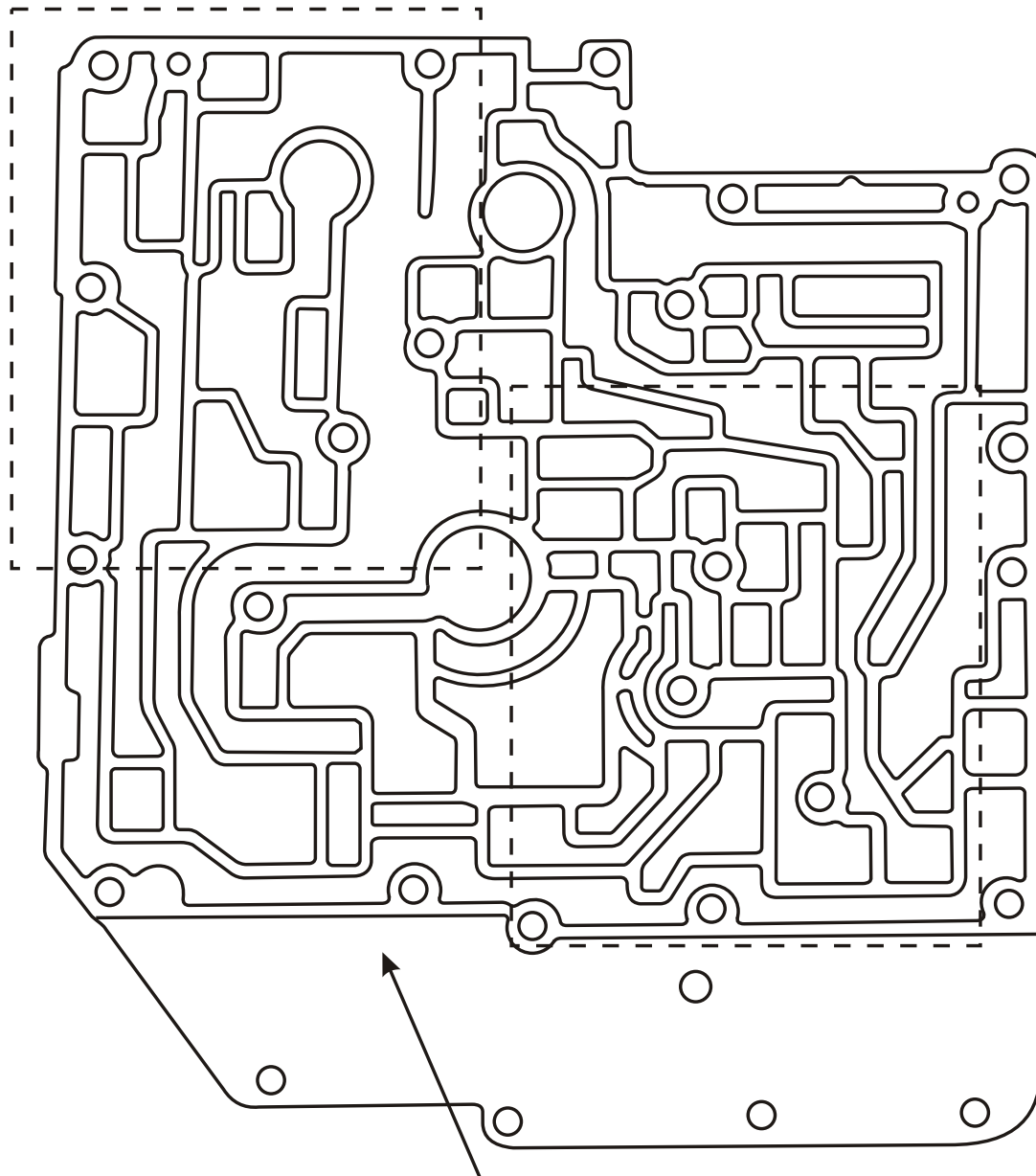


Valve Body Casting Number RF-XF1P

Copyright © 2008 ATSG

Figure 5

2004-Up Valve Body-Oil Pump Side

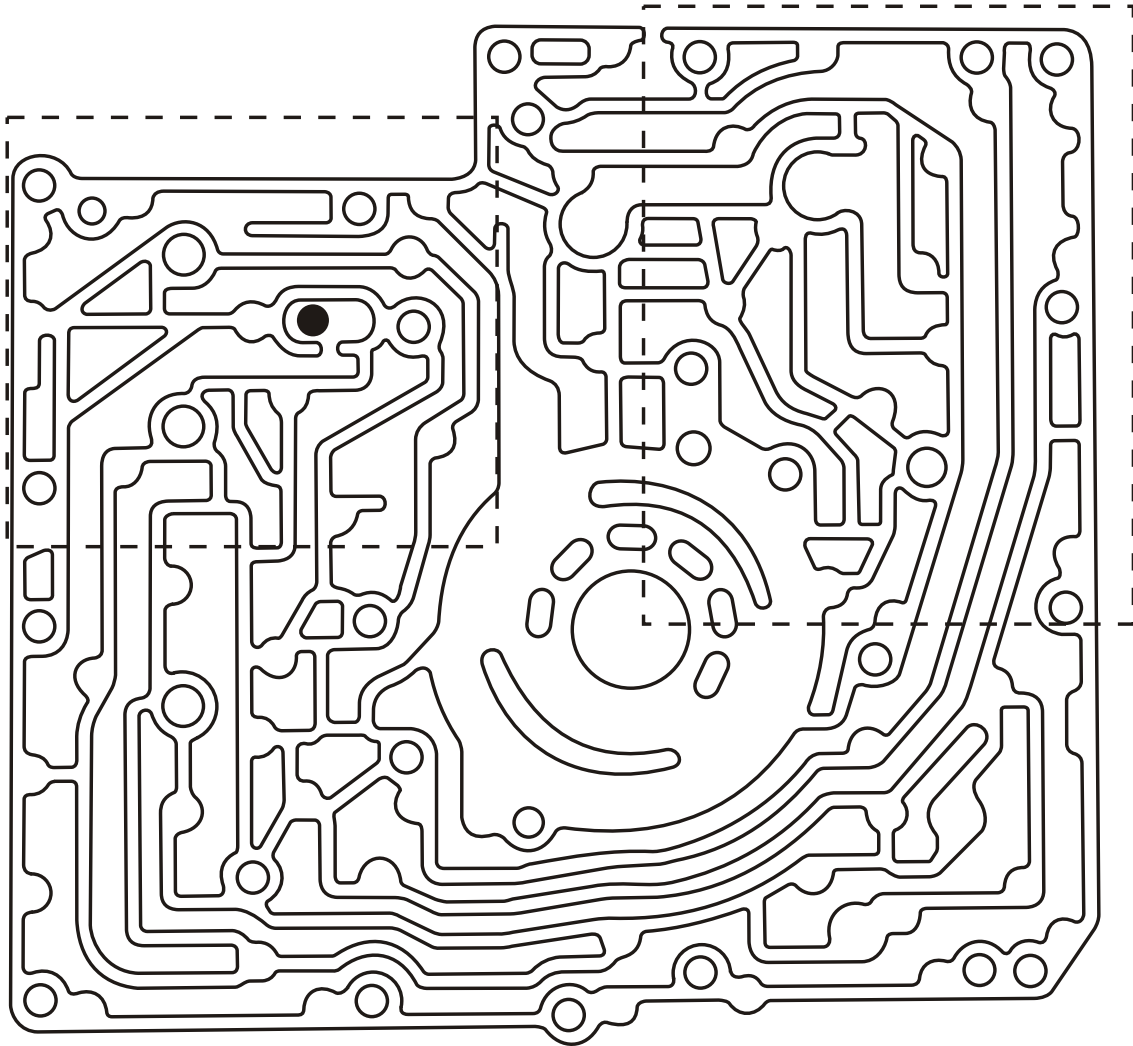


Valve Body Casting Number RF-4F1P

Copyright © 2008 ATSG

Figure 6

2000-2003 Oil Pump

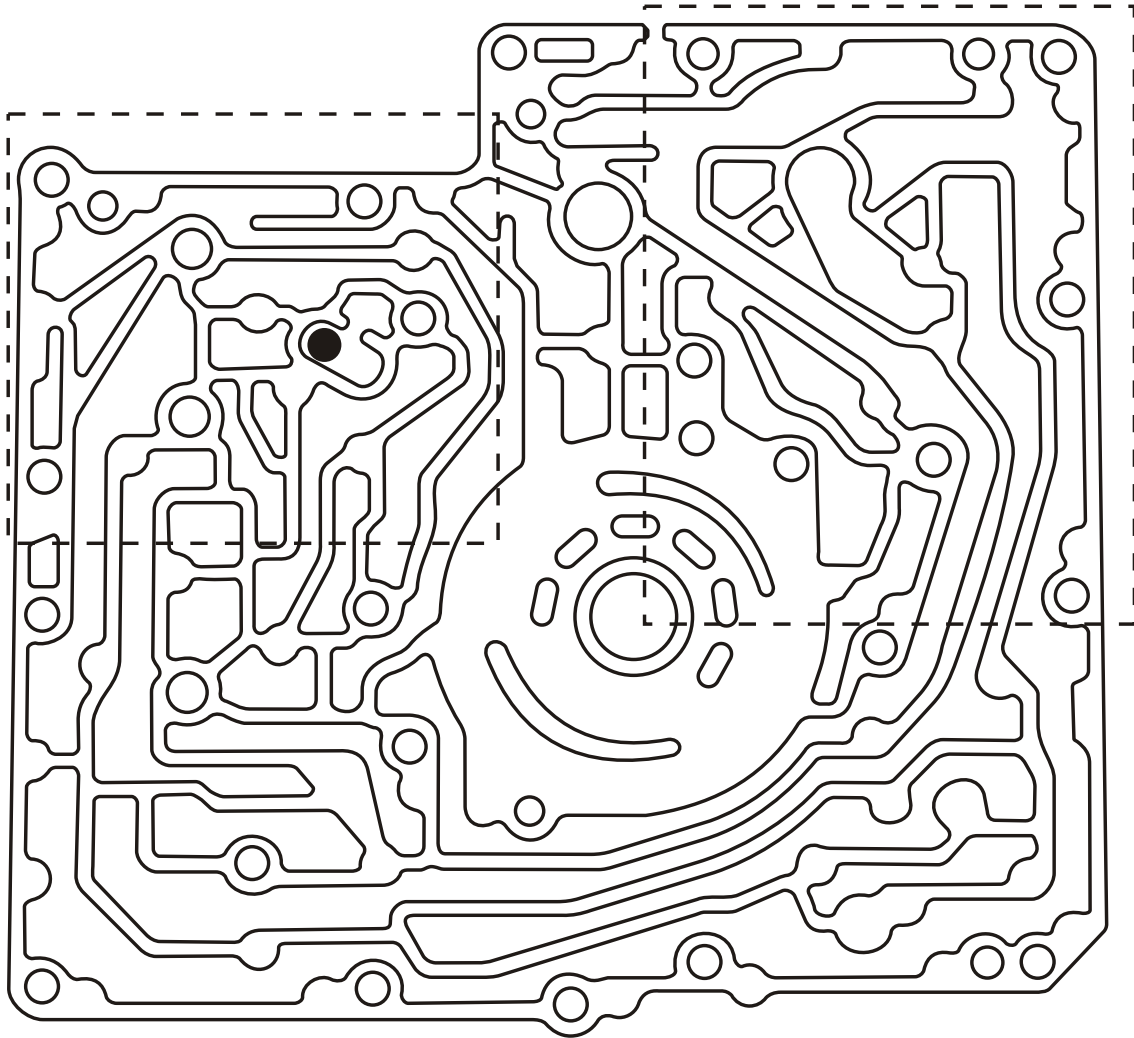


Oil Pump Casting Number RF-XF1P

Copyright © 2008 ATSG

Figure 7

2004-Up Oil Pump



Oil Pump Casting Number RF-4F1P

Copyright © 2008 ATSG

Figure 8