

DECONSTRUCTING DEEDEE

Computers come in all shapes and sizes.

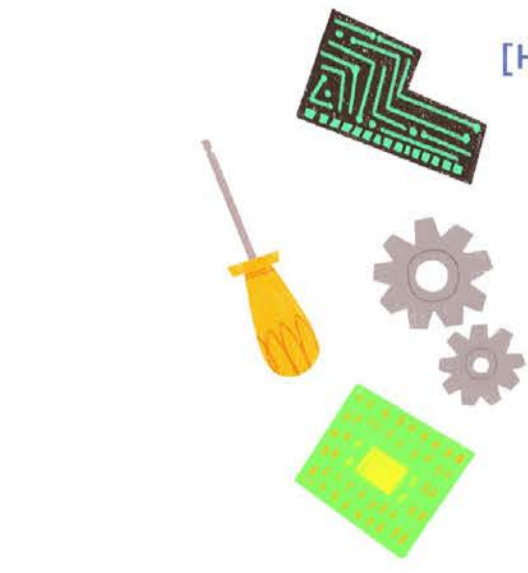
They can be as big as televisions or as small as pennies. DeeDee the droid is a computer too!
Let's deconstruct and reconstruct DeeDee.

[Hint: think, build, play, help others, solve problems, don't give up]

Here's what the inside of DeeDee looks like!

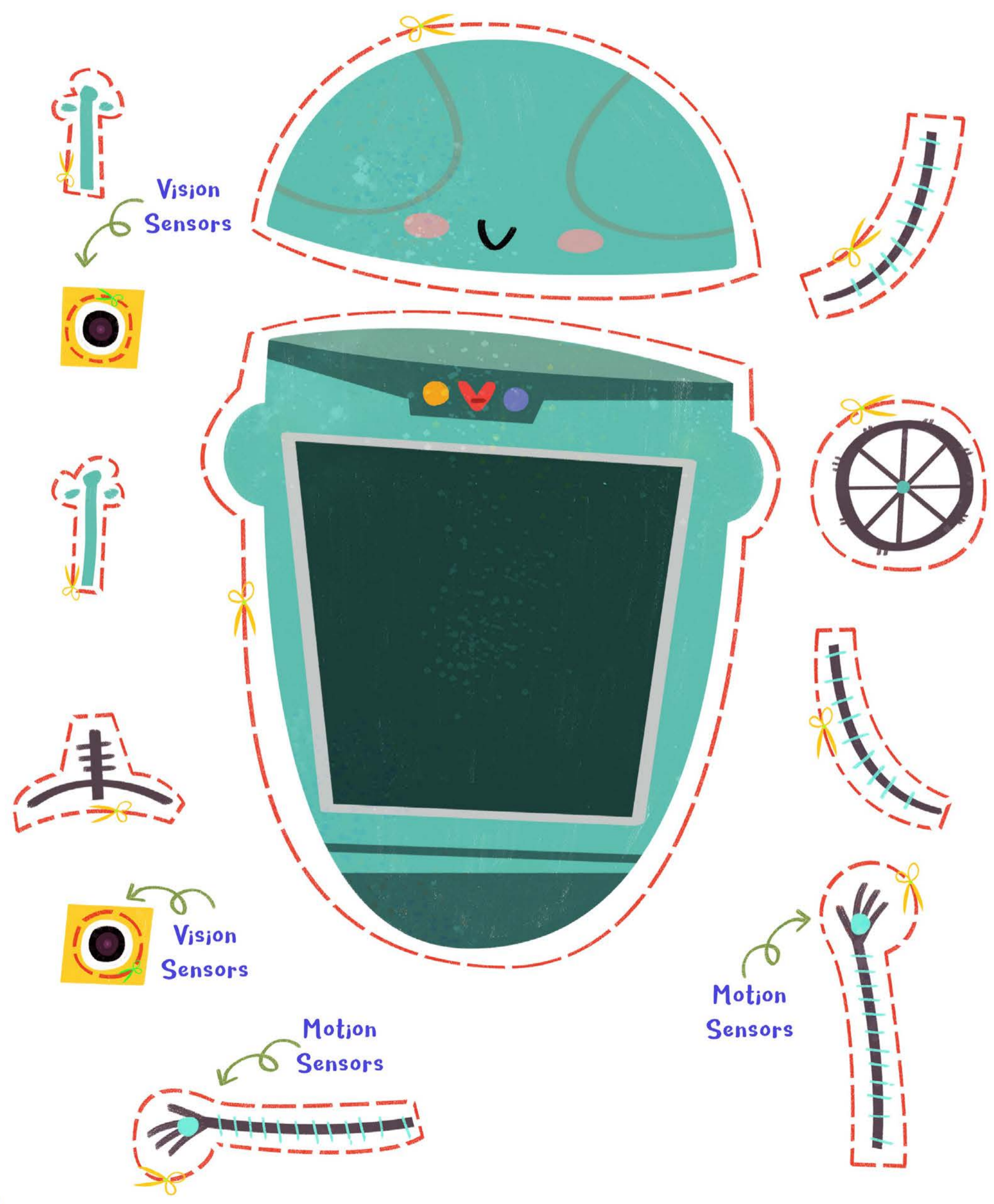
Now cut out DeeDee's body parts (Page 2)
and computer parts (page 3)
and create your very own droid!

Want some more fun? Let's accessorize (page 4)



DECONSTRUCTING DEEDEE

Now cut out DeeDee's body parts

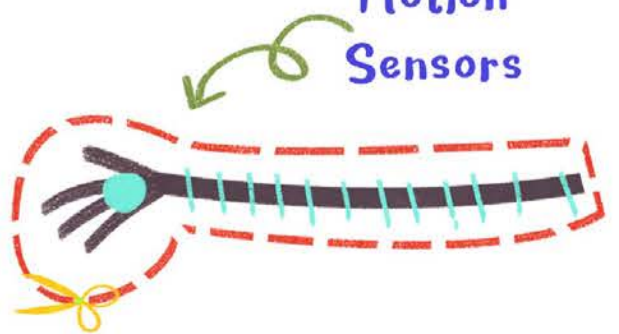


Vision
Sensors

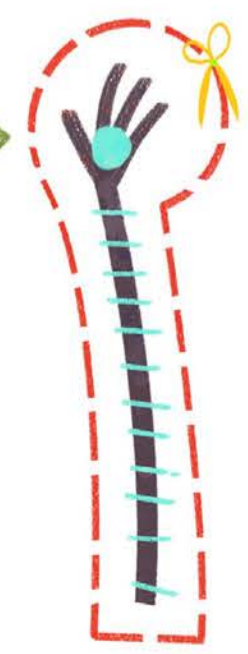


Vision
Sensors

Motion
Sensors

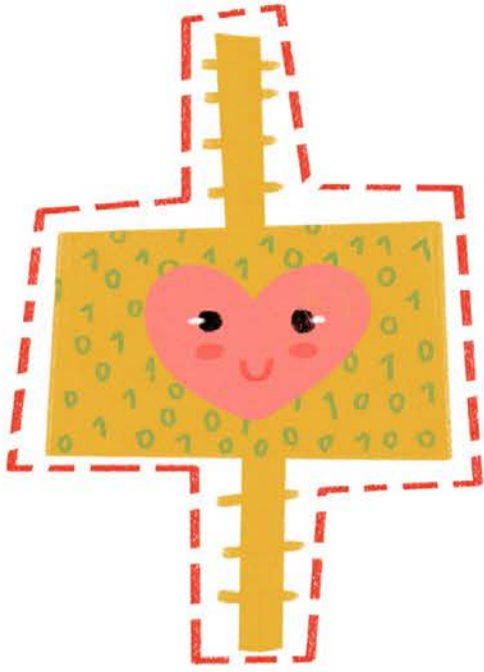


Motion
Sensors



DECONSTRUCTING DEEDEE

Here are some components DeeDee is made of



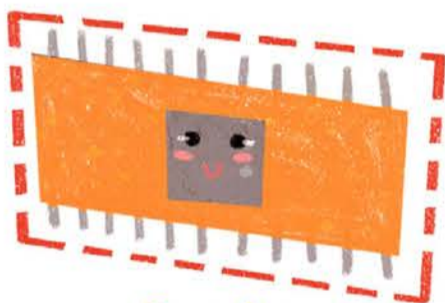
Code



Read Only Memory (ROM)



Processor



Register



Random Access Memory (RAM)



Graphics Card



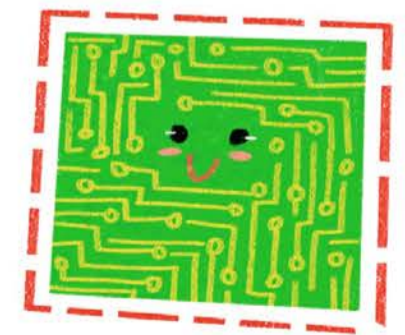
Hard Drive



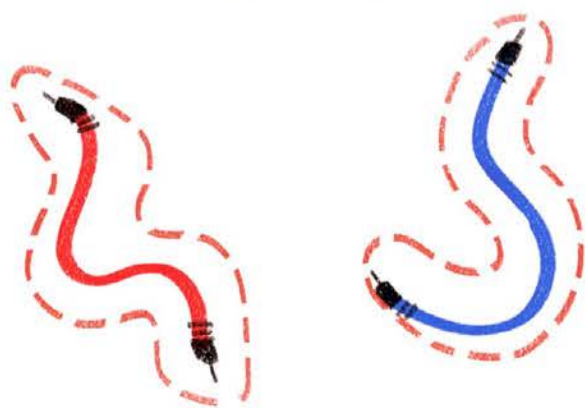
Cooling Fan



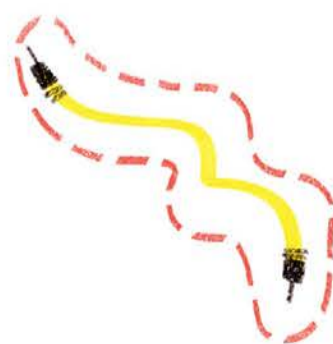
Error



Circuit Board



Cables



DECONSTRUCTING DEEDEE

